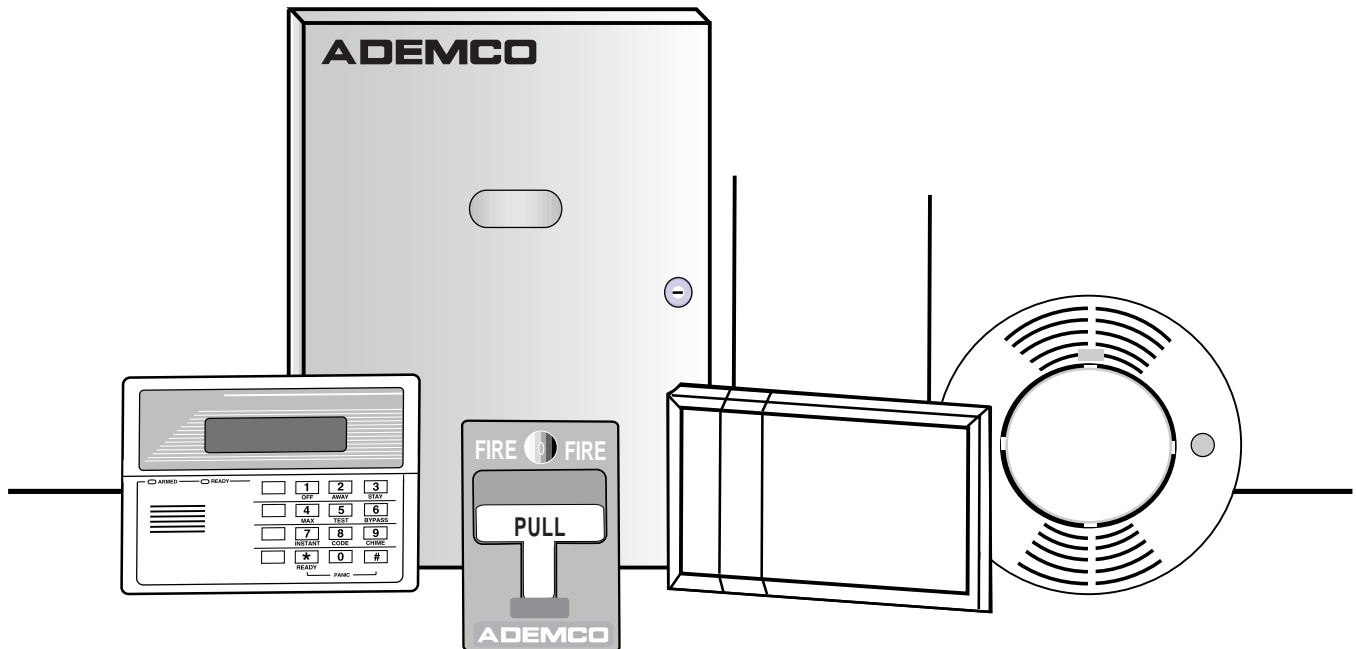


VISTA-32FB

Commercial Fire and Burglary Partitioned Security System with Scheduling

Programming Guide



® ADEMCO

Table Of Contents

Recommended Programming Procedure.....	3
Program Field Categories.....	4
VISTA 32FB Programming Form.....	5
Partition-Specific Fields	10
Programming With #93 Menu Mode	12
5800 Series Transmitters Loop Designations.....	16
Alpha Descriptor Vocabulary	27
Relay Voice Descriptors and Custom Word Substitutes Vocabulary	35
System Layout Worksheets.....	36
Output Devices Programming	43
Scheduling Menu Prompts	50
Scheduling Worksheets.....	51

The purpose of this document is to provide a quick and easy way to program your entire system. A recommended programming procedure is included, followed by a list of program fields with the corresponding program group they belong to (system-wide, partition-specific, scheduling, etc.). Two program forms are included, one contains all the programming fields, and the other contains the partition-specific fields. If you are setting up a single-partition system, the partition-specific fields become system-wide fields.

Following the program forms are system layout worksheets. We recommend that you use these sheets to plan your system before programming is performed. If you need further information about specific programming options, see the *VISTA-32FB Installation and Setup Guide*.

- Make sure that one 2-line alpha keypad is connected to the control and is set to device address "00."

Single Partition System

- The system default is for a single partition system. Use the VISTA-32FB SINGLE PARTITION PROGRAMMING FORM when programming for single partition usage. Follow the steps outlined in RECOMMENDED PROGRAMMING PROCEDURE of this document for proper programming procedure.

Multiple-Partition System

- You must enter the number of partitions you are using in data field 2*00 to set the system for multiple partitions. Use the VISTA-32FB SINGLE PARTITION and the PARTITION-SPECIFIC PROGRAM FORMS when programming the system for multiple partitions. Follow the steps outlined in RECOMMENDED PROGRAMMING PROCEDURE of this document for proper programming procedure.

SUMMARY OF PROGRAMMING COMMANDS

- | |
|--|
| <ul style="list-style-type: none">• To enter program mode, enter installer code + [8] + [0] + [0]• To set standard defaults, press *97• To change to next page of program fields, press *94• To return to previous set of fields, press *99• To erase account & phone number field entries, press [*] + field number + [*]• To assign zone descriptors, press #93 + follow menu prompts• To add custom words, press #93 + follow menu prompts• To enter Installer's Message, press #93 + follow menu prompts• To exit program mode, press *99 OR *98: *99 allows re-access to programming mode by installer code. *98 prevents re-access to programming mode by installer code. |
|--|

Standard default (*97) values are shown in brackets [], otherwise default = 0.

Recommended Programming Procedure

The following is a step-by-step procedure recommended for programming your VISTA-32FB system.

- 1. Set the keypads (and other peripheral devices) to the appropriate addresses.**
- 2. Set factory defaults by pressing *97.**

This will automatically enable keypad addresses 00-01, so be sure at least one keypad is set to one of these addresses
- 3. Program system-wide (global) data fields.**

Using the programming form as a guide, enter program mode and program all system wide programming fields. These options affect the entire system, regardless of partitions. They include control options, downloader and dialer options, RF options, event logging options, etc. Refer to the COMPLETE LIST OF PROGRAMMING FIELDS for a listing of the program fields arranged by function.

Note that field 2*00 (number of partitions) must be programmed before continuing.
- 4. Program partition-specific fields.**

After the system-wide fields have been programmed, program all partition-specific programming fields by first pressing *91 to select a partition (while still in data field program mode). Then enter the first partition-specific field number *09. The next partition-specific field will automatically be displayed when you are finished entering the value for field *09. Partition-specific fields can have different values for each partition. To program the fields for the next partition, press *91, enter the desired partition number, then enter field *09. Refer to the *MECHANICS OF PROGRAMMING* section in the *VISTA-32FB Installation and Setup Guide* for detailed instructions.
- 5. Use #93 Menu Mode for device programming.**

Refer to the *Device Programming* in this guide to assign keypad ID numbers and default partitions for each keypad, and to selectively suppress certain keypad sounding options. Also use this mode to assign RF receivers, relay modules, the VIP module, the ECP Long Range Radio, and the Vista Gateway Module.
- 6. Use #93 Menu Mode for zone programming.**

Refer to the *Zone Programming* in this guide to program zone response types, assign right loop zones and wireless zones, assign zones to partitions, and to program alarm report codes.
- 7. Use #93 Menu Mode for programming outputs.**

Refer to the *Output Programming* in this guide to program desired output operation.
- 8. Program Communication options.**

Refer to *System Communication* section in the *VISTA-32FB Installation and Setup Guide* for detailed instructions, then use #93 menu mode to program report codes.
- 9. Use #93 Menu Mode for programming alpha descriptors.**

Refer to the *Alpha Programming* in this guide to enter zone and partition descriptors and a custom installer's message.
- 10. Use #93 Menu Mode for relay voice descriptors and custom word substitutes.**

Refer to the *Relay Voice Descriptors* in this guide for further instructions for programming relay descriptors to be annunciated by the VIP module, as well as the *Custom Index* section for custom word substitutes.
- 11. Use #80 Mode for programming schedules.**

Refer to the *Scheduling Menu Prompts* in the guide to program open/close schedules, temporary and holiday schedules, limitation of access schedules, and time driven events.
- 12. Define user access codes.**

Refer to *User Access Codes* section in the *VISTA-32FB Installation and Setup Guide* to program authority level, O/C reporting option, partition assignments, and wireless key assignments for each user.
- 13. Exit Programming Mode.**

Exit programming mode by pressing either *98 or *99. Additional entries of *99 is required if the exit is being done from fields 1*00 and above.

To prevent re-access to programming mode using the Installer's code, use *98. The only way to re-access programming mode is by depressing both the [*] and [#] keys at the same time within 30 seconds of power up.

Exiting by using *99 always allows reentry into programming mode using the Installer's code. Either way of exiting will allow access via downloading. Note that if local programming lockout is set via downloading, programming mode cannot be entered at the keypad.

Program Field Categories

In the following pages, the programming fields have been arranged by category. Use this index to cross reference the numerical ordered fields on the programming form.

Field	Group	Field	Group	Field	Group
*00	System-Wide	*68	Communications	1*56	System-Wide
*08	System-Wide	*69	Communications	1*57	System-Wide
*09	Partition-Specific	*70	Communications	1*58	System-Wide
*10	Partition-Specific	*71	Communications	1*60	System-Wide
*11	Partition-Specific	*72	Communications	1*70	System-Wide
*12	Partition-Specific	*73	Communications	1*71	System-Wide
*13	Partition-Specific	*74	Communications	1*72	System-Wide
*15	System-Wide	*75	Communications	1*73	System-Wide
*16	Partition-Specific	*76	Communications	1*74	System-Wide
*17	System-Wide	*79	Communications	1*75	System-Wide
*19	System-Wide	*80	Communications	1*76	Partition-Specific
*20	System-Wide	*83	Communications	1*77	System-Wide
*22	Partition-Specific	*84	Partition-Specific	2*00	System-Wide
*23	Partition-Specific	*85	Partition-Specific	2*01	System-Wide
*24	System-Wide	*87	Partition-Specific	2*02	System-Wide
*25	System-Wide	*88	Partition-Specific	2*05	Partition-Specific
*26	Communications	*89	Communications	2*06	Partition-Specific
*27	Communications	*90	Partition-Specific	2*07	Partition-Specific
*28	System-Wide	1*01	#93 Menu Mode	2*08	Partition-Specific
*29	Partition-Specific	1*02	#93 Menu Mode	2*09	Partition-Specific
*30	Communications	1*03	#93 Menu Mode	2*10	Partition-Specific
*31	Communications	1*04	#93 Menu Mode	2*11	System-Wide
*32	Partition-Specific	1*05	#93 Menu Mode	2*18	Partition-Specific
*33	Communications	1*06	#93 Menu Mode	2*19	Partitioning
*34	Communications	1*07	#93 Menu Mode	2*20	Partition-Specific
*35	System-Wide	1*08	#93 Menu Mode	2*21	System-Wide
*36	System-Wide	1*09	#93 Menu Mode	2*22	Partition-Specific
*37	System-Wide	1*17	System-Wide	2*23	Partition-Specific
*38	Partition-Specific	1*18	Partition-Specific	2*24	Partition-Specific
*39	Partition-Specific	1*19	Partition-Specific	3*00	System-Wide
*40	Communications	1*20	System-Wide	3*01	System-Wide
*41	System-Wide	1*21	System-Wide	3*12	System-Wide
*42	Communications	1*22	System-Wide	3*13	System-Wide
*43	Communications	1*23	System-Wide	3*14	System-Wide
*44	Communications	1*24	System-Wide	3*15	System-Wide
*45	Communications	1*25	System-Wide	3*16	System-Wide
*46	Communications	1*26	System-Wide	3*17	System-Wide
*47	Communications	1*28	System-Wide	3*18	System-Wide
*48	Communications	1*29	System-Wide	3*19	System-Wide
*49	Communications	1*30	System-Wide	3*20	System-Wide
*50	Communications	1*31	System-Wide	3*21	System-Wide
*51	Communications	1*33	Communications	3*30	System-Wide
*52	Communications	1*34	Communications	3*31	System-Wide
*53	Communications	1*42	Communications	3*50	System-Wide
*56	Communications	1*43	Partition-Specific	3*55	System-Wide
*57	Communications	1*44	System-Wide	3*56	System-Wide
*58	Communications	1*45	Partition-Specific	3*57	Partition-Specific
*59	Communications	1*47	Partition-Specific	3*59	Partition-Specific
*64	Communications	1*48	System-Wide	3*60	Partition-Specific
*65	Communications	1*49	System-Wide	3*61	System-Wide
*66	Communications	1*52	Partition-Specific	3*82	System-Wide
*67	Communications	1*53	System-Wide	3*85	System-Wide

VISTA 32FB Programming Form

Some fields are programmed for each partition (shown as shaded fields). If Programming a Multiple Partition System, see the PARTITION-SPECIFIC section for programming these fields. Standard default (*97) values are shown in brackets [], otherwise default = 0.

- *00 INSTALLER CODE
Enter 4 digits, 0-9 [5140]
- *08 TEMPORAL SIREN PULSE [0]
1 = Yes; 0 = No
- *09 ENTRY DELAY #1 [02]
00-15 times 15 seconds
Maximum "03" for UL Commercial Burglary installations.
- *10 EXIT DELAY #1 [03]
00-15 times 15 seconds
Maximum "04" for UL Listed installations.
- *11 ENTRY DELAY #2 [06]
00-15 times 15 seconds (must be longer than Entry Delay #1).
Maximum "03" for UL Commercial Burglary installations.
- *12 EXIT DELAY #2 [08]
00-15 times 15 seconds (must be longer than Exit Delay #1)
Maximum "04" for UL Commercial Burglary installations.
- *13 BELL 1 TIMEOUT [04]
01-15 times 2 minutes. Minimum 16 min. for UL Commercial Burglary and 6 min. for Commercial Fire.
- *15 KEYSWITCH ASSIGNMENT [0]
Enter partition in which keyswitch used,
1-2; 9=Silences bells if fire present; 0=disable
- *16 BELL 1 CONFIRMATION OF ARMING DING [0]
1=enable; 0=disable. Must be "1" for UL Burglary Installations.
- *17 AC LOSS KEYPAD SOUNDING [0]
1=yes; 0=no
- *19 RANDOMIZE AC LOSS REPORT [2]
1=10-40 min; 2=6-12 hrs; 0=normal report (about 2 min. after AC loss). Must be "2" for Central and Remote Station Fire alarm systems.
- *20 VIP MODULE PHONE CODE
Enter 01 - 09 for the first digit; enter [00] , [11] 11 for "*" or 12 for "#" for the second digit. This field Must be set to "0" for Commercial Fire & UL Commercial Burglary installations.
- *22 KEYPAD PANIC ENABLE [001]
1=enable; 0=disable 995 996 999
- *23 MULTIPLE ALARMS [1]
1=yes; 0=no
- *24 IGNORE EXPANSION ZONE TAMPER [0]
1=Ignore; 0=Enable tamper for RF and RPMs. Must be "0" for UL installations if using these devices.
- *25 BURG.TRIGGER FOR RESPONSE TYPE 8 [1]
1=enable; 0=disable
- *26 INTELLIGENT TEST REPORTING [0]
1=yes, (no report sent if any other report was recently sent); 0=no.. Must be 0 for Commercial Fire & UL Commercial Burglary.
- *27 TEST REPORT INTERVAL [024]
Enter interval in hours, 001-999; 000=no report ; Max. 024 for Commercial Fire & UL.
- *28 POWER UP IN PREVIOUS STATE [1]
1=yes; 0=no; "1" for UL.
- *29 QUICK ARM [1]
1=yes; 0=no
- *30 MAIN DIALER (TOUCHTONE OR ROTARY) [0]
1=TouchTone; 0=rotary
- *31 PABX ACCESS CODE
00-09; B-F (11-15)
- *32 PRIM. SUBS. ACCT #
Enter 00-09; B-F (11-15) [15 15 15 15]
- *33 PRIMARY PHONE NUMBER

Enter 0-9 for each digit. Enter #11 for *, #12 for #, #13 for 2 second pause
- *34 SECONDARY PHONE NUMBER

Enter 0-9 for each digit. Enter #11 for *, #12 for #, #13 for 2 second pause
- *35 DOWNLOAD PHONE No.

Enter 0-9 for each digit. Enter #11 for *, #12 for #, #13 for 2 second pause
- *36 DOWNLOAD ID No.

Enter 00-09; A-F (10-15) [15 15 15 15 15 15 15 15]

***37 DOWNLOAD COMMAND ENABLES**

Dialer System Not Remote Remote Remote UploadDownload
 Shutdwn Shutdwn Used Bypass Disarm Arm Program Program
 See field 1*53 for Callback disable option; [1=enable];
 0=disable; For Commercial Fire & UL installations, all
 entries must be "0."

***38 PREVENT ZONE XXX BYPASS** [000]
 001-032; 00 if all zones can be bypassed

***39 ENABLE OPEN/CLOSE REPORT FOR INSTALLER CODE** 1=enable; 0=disable [1]

***40 OPEN/CLOSE REPORT FOR KEYSWITCH** [0]
 1=enable; 0=disable

***41 NORMALLY CLOSED or EOLR (Zones 3-8)** [0]
 1=N.C.loops; 0=EOLR supervision; Must be "0" for Commercial Fire & UL.

***42 DIAL TONE PAUSE** [0]
 0=5 seconds; 1=11 seconds; 2=30 seconds; Must be "0" Commercial Fire & UL.

***43 DIAL TONE DETECTION** [1]
 1=wait for true dial tone; 0=pause, then dial

***44 RING DETECTION COUNT** [00]
 01-14; 15=answering machine; 00=no detection. Must be "00" for Commercial Fire & UL Burglary.

***45 PRIMARY FORMAT** [0]
 0=Low Speed; 1=Contact ID; 2=Ademco High Speed; 3=Ademco Express

***46 LOW SPEED FORMAT (Primary)** [0]
 0=Ademco Low Speed; 1=Sescoa/Radionics

***47 SECONDARY FORMAT** [0]
 0=Low Speed; 1=Contact ID; 2=Ademco High Speed; 3=Ademco Express

***48 LOW SPEED FORMAT (Sec.)** [0]
 0=Ademco Low Speed; 1=Sescoa/Radionics

***49 CHECKSUM VERIFICATION** [0] [0]
 1=yes; 0=no Prim Sec

***50 SESCOA/RADIONICS SELECT** [0]
 1=Sescoa; 0=Radionics

***51 DUAL REPORTING** [0]
 1=yes; 0=no If used with Spilt Reporting "1" option (1*34), alarms and alarm restores go to both primary & secondary numbers, while all other reports go to secondary only. If used with Split Reporting "2" option, alarms and alarm restores go to both, open/close and test messages go to secondary only, while all other reports go to primary. If used with Split Reporting "3" option, fire alarms and fire supervisory signals go to both primary and secondary, while all other reports go to secondary only.

***52 STANDARD/EXPANDED REPORT FOR PRIMARY**

[0 0 0 0 0 0]
 Alarm Rstr Bypass Trbl Opn/Cls Low Bat
 0=standard; 1=expanded;
 Note: Expanded overrides 4+2 format.

***53 STANDARD/EXPANDED REPORT FOR SECONDARY**

[0 0 0 0 0 0]
 Alarm Rstr Bypass Trbl Opn/Cls Low Bat
 0=standard; 1=expanded;
 Note: Expanded overrides 4+2 format.

***56 USE LRR ONLY** [0]
 0=No, 1=Yes, if built-in dialer will not be used.

***57 LRR IF DIALER FAILS** [0]
 0=No, 1=Yes, if radio is to be used as a backup to dialer

***58 LRR ENABLE CS #1**
 [0 0 0 0 0 0]
 Alarm Trbl Byp O/C Syst Tst
 0=disable, 1=enable for reports for primary subs id of LRR

***59 LRR ENABLE CS#2**
 [0 0 0 0 0 0]
 Alarm Trbl Byp O/C Syst Tst
 0=disable, 1=enable for reports for secondary subs id of LRR

***64 PAGER INSTALLED** [0]
 0=No, 1=Yes, alpha numeric pager interface is installed.

***65 PAGER PHONE # FOR ALARMS**

 Enter 0-9 for each digit. Enter #11 for *, #12 for #, #13 for 2 second pause

***66 PAGER ID # FOR ALARMS**

 Enter up to 10 digits for the pager id #

***67 PAGER PHONE # FOR SUPERVISION**

 Enter 0-9 for each digit. Enter #11 for *, #12 for #, #13 for 2 second pause

***68 PAGER ID # FOR SUPERVISION**

 Enter up to 10 digits for the pager id #

***69 PAGER PHONE # FOR BYPASSES**

 Enter 0-9 for each digit. Enter #11 for *, #12 for #, #13 for 2 second pause

***70 PAGER ID # FOR BYPASSES**

 Enter up to 10 digits for the pager id #

***71 PAGER PHONE # FOR OPENS/CLOSES**

Enter 0-9 for each digit. Enter #11 for *, #12 for #, #13 for 2 second pause

***72 PAGER ID # FOR OPENS/CLOSES**

 Enter up to 10 digits for the pager id #

***73 PAGER PHONE # FOR SYSTEM**

Enter 0-9 for each digit. Enter #11 for *, #12 for #, #13 for 2 second pause

***74 PAGER ID # FOR SYSTEM**

 Enter up to 10 digits for the pager id #

***75 PAGER PHONE # FOR TEST**

Enter 0-9 for each digit. Enter #11 for *, #12 for #, #13 for 2 second pause

***76 PAGER ID # FOR TEST**

 Enter up to 10 digits for the pager id #

ZONE TYPE RESTORE ENABLES

***79 FOR ZONE TYPES 1-8** ***80 FOR TYPES 9/10**

 1 2 3 4 5 6 7 8 9 10
 1=enable; [0]=disable

***83 FIRST TEST REPORT TIME**
 [Day 00; hour 12; min 00] Days 01-07 Hours 00-23 Min 00-59; 00 in all boxes=instant (Day 01= Monday)

***84 SWINGER SUPPRESSION** [03]
 01-15 alarms; Must be "00" (disabled) for UL.

***85 ENABLE DIALER REPORTS [0]**
 FOR PANICS & DURESS 995 996 999 Duress
 1=enable; 0=disable

***87 ENTRY WARNING** [1]
 1=continuous; 0=3 beeps

***88 BURGLAR ALARM COMM. DELAY** [0]
 1=16 seconds; 0=no delay. Must be "0" for UL Commercial Burg. installations.

***89 RESTORE REPORT TIMING** [0]
 0=Instant; 1=After bell timeout if zone is restored; 2=when system is disarmed. Must be "0" for fire or UL Commercial Burg. installations.

***90 SEC. SUBS. ACCT #**
 Enter 00-09; B-F (11-15) [15 15 15 15]

1*17 LOBBY PARTITION [0]
 Enter the "common lobby" partition (1-2)

1*18 AFFECTS LOBBY [0]
 Enter 1 if this partition affects the common lobby; enter 0 if it does not. Must be "0" for Commercial Fire & UL installations.

1*19 ARMS LOBBY [0]
 Enter 1 if arming this partition attempts to arm lobby; enter 0 if it does not. Must be "0" for Commercial Fire & UL installations.

1*20 EXIT ERROR LOGIC [0]
 0=No, 1=Bypass E/E and Interior zones faulted after exit delay. Must be "0" for Commercial Fire & UL installations.

1*21 EXIT DELAY RESET [0]
 0=No; 1=Resets Exit Delay to 60 seconds after zone is closed. Must be "0" for Commercial Fire & UL installations.

FIELDS 1*22-1*25: Allow four sets of two zones each to be linked so that both must fault within a five minute period to cause an alarm.

1*22 CROSS-ZONING PAIR ONE

1*23 CROSS-ZONING PAIR TWO

1*24 CROSS-ZONING PAIR THREE

1*25 CROSS-ZONING PAIR FOUR

1*26 PANIC BUTTON OR SPEEDKEY
 [00, 00, 00, 00]
 A **B** **C** **D**
 Enter speedkey macro # (01-35) to use keys A-C for macro. Otherwise enter 00 to use as panic. For D key, enter macro # or 00 to select macro when key is pressed.

MISCELLANEOUS WIRELESS OPTIONS

Fields 1*28 - 1*31 are not applicable to Commercial Fire or UL installations.

1*28 RF TX LOW BATTERY SOUND [0]
 1=immediate; 0=when disarmed

1*29 RF TX LOW BATTERY REPORT ENABLE [0]
 1=enable; 0=disable

1*30 RF RCVR CHECK-IN INTERVAL [06]
 02-15 times 2 hours; 00 disables supervision

1*31 RF TRANSMITTER CHECK-IN INTERVAL [12]
 02-15 times 2 hours; 00 disables transmitter supervision

1*33 TOUCH-TONE W/ROTARY BACKUP [0]
 1=enable; 0=disable

1*34 COMM. SPLIT REPORT SELECTION [0]
 0=no; 1=alarms and alarm restores primary, others secondary; 2=open/close, test secondary, others primary; 3 = fire alarms & troubles primary, all secondary. See *51 for comments if using with dual reporting.

- 1*35** ACCESS CONTROL DIALER ENABLES
 [0 0 0 0 0]
 Trace Trbl Byps Not used Syst Alm
 1=enable; 0=disable
- 1*42** CALL WAITING DEFEAT [0]
 1=Yes; 0=No.
- 1*43** PERM. KEYPAD BACKLIGHT [0]
 1=enable; 0=disable When disabled, display lights when any key is pressed, and turns off after period of keypad inactivity.
- 1*44** WIRELESS KEYPAD [0]
 TAMPER DETECT ENABLE 1=enable; 0=disable. Must be "0" for Commercial Fire and UL installations.
- 1*45** EXIT DELAY SOUNDING [0]
 1=enable; 0=disable. Produces quick beeping during exit delay if enabled.
- 1*47** CHIME ON BELL 1 [0]
 1=enable; 0=disable
- 1*48** WIRELESS KEYPAD ASSIGNMENT [0]
 0=disable; enter partition in which RF keypad used, 1-2. Must be "0" for Commercial Fire and UL installations.
- 1*49** SUPPRESS TX SUPERVISION SOUND [1]
 1=disable; 0=enable. Must be "0" for Commercial Fire and UL installations.
- 1*52** SEND CANCEL IF ALARM + OFF [0]
 1=no restriction; 0=within bell timeout period only
- 1*53** DOWNLOAD CALLBACK [0]
 1=callback not required; 0=callback required; Must be "0" for Commercial Fire and UL installations.
- 1*56** 50/60 Hz CLOCK SPEED [0]
 1=50 Hz; 0=60 Hz.
- 1*57** ENABLE 5800 RF BUTTON GLOBAL ARM [0]
 1=enable; 0=disable
- 1*58** 5800 RF BUTTON FORCE ARM [0]
 Enter "1" to enable. If a zone is faulted after pressing button, console will beep once. User should press button again within 4 sec. to force bypass those zones. Enter "0" to disable.
 Must be "0" for Commercial Fire and UL installations.
- 1*60** ZONE 5 AUDIO ALARM VERIFICATION [0]
 Enter 1 if 2-way audio (AAV) is being used; Enter 0 if it is not.
 Must be "0" for Commercial Fire and UL installations.
- 1*70** EVENT LOG TYPES
 [1 0 0 0 1 0]
 Alm Chck Byps O/C Syst Test
 1=enable; 0=disable
- 1*71** 12/24 HOUR TIME STAMP FORMAT [0]
 0=12 hour; 1=24 hour
- 1*72** EVENT LOG PRINTER ON-LINE [0]
 0=disable; 1=enable

- 1*73** PRINTER BAUD RATE 1=300; 0=1200 [0]
 Must be 1200 if using pager interface
- 1*74** RELAY TIMEOUT XX MINUTES [000]
 Enter the relay timeout, **0-127** in multiples of 2 minutes, desired for #80 Menu Mode time driven event relay command numbers "04/09" and #93 Menu Mode Output Programming command "56".
- 1*75** RELAY TIMEOUT YY SECONDS [000]
 Enter the relay timeout, **0-127** seconds, desired for #80 Menu Mode time driven event relay command numbers "05/10" and #93 Menu Mode Output Programming command "57".
- 1*76** ACCESS CONTROL RELAY FOR PART.[00]
 Relay will be pulsed for 2 seconds whenever code + [0] is pressed. Enter 00-96; 00=none. Must be "00" for Commercial Fire & UL..
- 1*77** LOG FIRST MAINTENANCE SIGNAL [0]
 0=No Log; 1=Log first maintenance signal from each smoke detector

3rd Page Programming Fields (press *94)

- 2*00** NUMBER OF PARTITIONS [1]
 Enter 1-2
- 2*01** DAYLIGHT SAVINGS TIME [04, 10]
 START/END MONTH Start End
 00-12; if no daylight savings time, enter 00,00
- 2*02** DAYLIGHT SAVINGS TIME [1, 5]
 START/END WEEKEND # Start | End
 Enter 1-7. 1=first; 2=second; 3=third; 4=fourth; 5=last; 6=next to last; 7=3rd from last [1,5; 1st Sunday in April, last in Oct.]
- 2*05** AUTO-ARM DELAY [15]
 Enter the time between the end of the arming window and the start of auto-arming warning period, in values of 1-14 times 4 minutes 00=instant; [15=no auto arm at all]. When this delay expires, the Auto-Arm Warning Period begins.
- 2*06** AUTO-ARM WARNING PERIOD [15]
 This is the time during which the user is warned to exit the premises prior to the auto-arming of the system (beeps every 15 seconds; "ALERT" displayed). Enter 01-15 minutes. 00=instant at end of arming delay .
- 2*07** AUTO-DISARM DELAY [15]
 This is the time between the end of the disarming window and the start of auto-disarming. Enter 01-14 times 4 minutes; 00=instant at end of window; 15=no auto-disarm.
- 2*08** ENABLE FORCE ARM FOR AUTO-ARM [0]
 0=disable; 1=enable
- 2*09** OPEN/CLOSE REPORTS BY EXCEPTION [0]
 1=enable; 0=disable; If enabled, only openings and closings occurring outside the scheduled opening/closing windows will trigger dialer reports. Opening reports will also be suppressed during the closing window, in order to prevent false reports when the user arms the system and then reenters the premises to retrieve a forgotten item.

2*10 ALLOW DISARMING ONLY DURING [0]

ARMING/DISARMING WINDOWS

0=disable; 1=enable

See system-wide field 2*11 if enabling field 2*10. This feature adds high security to the installation.

2*11 ALLOW DISARM OUTSIDE WINDOW [0]

IF ALARM OCCURS

Used only if field 2*10 (partition-specific field) is set to "1". If this field is enabled ("1") the system can be disarmed outside the disarm window if an alarm has occurred. If "0", disarming can only be done during the disarm window. If field 2*10 is set to "0" for a partition, this field has no effect for that partition.

2*18 ENABLE GOTO FOR THIS PARTITION [0]

1=Allow log-on from other partitions; 0=disable

2*19 USE PARTITION DESCRIPTORS [0]

0=disable; 1=enable

2*20 ENABLE J2 TRIGGERS by PARTITION [1]

0=disable for displayed partition; 1=enable for displayed partition

2*21 ENABLE SUPERVISION PULSES FOR LRR

TRIGGER OUTPUTS [00000]
F B P S T

Used for supervised connection to 7920SE. Enter 0 to disable or 1 to enable the listed outputs. F= Fire; B= Burglary; S= Silent panic/duress. Enter 1 for Commercial Burglary and UL.

2*22 DISPLAY FIRE ALARMS OF [0]

OTHER PARTITIONS

0=No; 1=Yes.

2*23 DISPLAY BURG & PANIC ALARMS OF [0]

OTHER PARTITIONS

0=No; 1=Yes.

2*24 DISPLAY TROUBLES OF OTHER [0]

PARTITIONS

0=No; 1=Yes.

4th Page Programming Fields (press *94)

3*00 DISPLAY TRBL INSTEAD OF CHECK [0]

3*01 FIRE DISPLAY LOCK [0]

0=scroll all alarms; 1=lock display of first fire alarm.

3*12 ZN TYPE 18 DELAY USE [1]

0=Check Displayed; 1=Trbl Displayed

3*13 SUPV. N.O./N.C. SELECTION [0]

0=Supv. on short/trouble on open; 1=supv. on short or open

3*14 WATERFLOW SILENCE OPTION [0]

0=Silence on Code + OFF; 1=Silence when waterflow restores

3*15 ALARM BELL SOUND [1,0]

0=pulsed; 1=steady Bell 1 Bell 2

3*16 DELAY for ZONE TYPES 17 & 18 [00]

(Waterflow & Fire Supv) Enter 00-15 times 2 seconds

3*17 ALTERNATE FUNCTION (TAMPER) [0]

FOR ZONE 6 0=disabled; 1=enabled

3*18 EXTENDED DELAY FOR TYPES 17&18 [0]

0=No; 1=Yes

3*19 ENABLE J2 HEADER PRINTER PORT [0]

0=pins 5&9 function as per field 3*20; 1=pins 5&9 act as printer RXD & DTR

3*20 TRIGGER OUTPUTS SELECTION [0]

0= LORRA full connection & Remote Console Sounder; 1=LORRA limited conn. & Keypress LEDs; 2=LORRA fire only conn. & 5140LED

3*21 MAX # OF DIALER ATTEMPTS [8]

1-8 (3, 4 or 5 for NFPA72 compliant systems when a secondary phone number is programmed (field *34)

3*30 DIALER SELECTION [1,0]

1=enabled; 0=disabled Main Backup

3*31 BACKUP DIALER TOUCHTONE/ROTARY [0]

1=TouchTone; 0=Rotary

3*50 ZONE TYPE RESTORE ENABLES

FOR ZONE TYPES 16-18 16 17 18

1 = enabled; [0 = disabled]

3*55 RESET ON SECOND OFF FOR BELL 1 [0]

1 = enabled; 0 = disabled

3*56 RESET ON SECOND OFF FOR BELL 2 [0]

1 = enabled; 0 = disabled

3*57 BELL 2 & AUX. RELAY CONFIRM

ARM DING Bell 2 AUX.

1=enable; [0=disable] . Must be 1 for UL Commercial Burglary.

3*59 ENABLE BELL 2 & AUX. RELAY

CHIME ANNUNCIATION Bell 2 AUX

1=enable; [0=disable]

3*60 BELL 2 & AUX. RELAY TIMEOUT

00-15 times 2 minutes; 00=no timeout [00,00] Bell 2 AUX Must be minimum of 16 minutes for UL Burglary installations.

3*61 AUX. RELAY FUNCTION [1]

0=Trouble/supervisory; 1=Alarm, silenced by code + OFF 2=Smoke Detector Reset; 3=Battery Save; 4=Alarm, silenced by code + [#] + 67

3*82 ENABLE BURG. FEATURES ON PART. 1 [1]

1=enable; 0=disable; "0" disables AWAY, STAY, MAX, TEST, INSTANT & CHIME functions

3*85 ENABLE FIRE & SYSTEM ZONE BYPASS [1]

0=not enabled; 1=only installer can bypass; 2=only installer & master user can bypass. Applies to fire zone types 9, 16, 17 & 18 and system zones 970-977. Applies to Partition 1 only.

SUMMARY OF PROGRAMMING COMMANDS

- **To enter program mode**, enter installer code + [8] + [0] + [0]
- **To set standard defaults**, press *97
- **To change to next page of program fields**, press *94
- **To return to previous set of fields**, press *99
- **To erase account & phone number field entries**, press [*] + field number + [*]
- **To assign zone descriptors**, press #93 + follow menu prompts
- **To add custom words**, press #93 + follow menu prompts
- **To enter Installer's Message**, press #93 + follow menu prompts
- **To exit program mode**, press *99 OR *98: *99 allows re-access to programming mode by installer code. *98 prevents re-access to programming mode by installer code.

Partition-Specific Fields

(Duplicate this page for each partition in the installation.)

To program these fields,

1. Press *91 to select a partition.
2. Enter a partition-specific field number (ex. *09).
3. Make the required entry.
4. Repeat steps 1-3 for each partition in the system.

PARTITION # _____ PROGRAM FIELDS

1st Page Fields

- | | |
|--|---|
| <p>*09 ENTRY DELAY #1 [02] <input style="width: 20px;" type="text"/> <input style="width: 20px;" type="text"/></p> <p>00-15 times 15 seconds. Maximum 03 for UL Listed installations.</p> | <p>*32 PRIM. SUBS. ACCT # <input style="width: 20px;" type="text"/> <input style="width: 20px;" type="text"/> <input style="width: 20px;" type="text"/> <input style="width: 20px;" type="text"/></p> <p>Enter 00-09; B-F (11-15) [15 15 15 15]</p> |
| <p>*10 EXIT DELAY #1 [03] <input style="width: 20px;" type="text"/> <input style="width: 20px;" type="text"/></p> <p>00-15 times 15 seconds. Maximum 04 for UL Listed installations.</p> | <p>*38 PREVENT ZONE XXX BYPASS [000] <input style="width: 20px;" type="text"/> <input style="width: 20px;" type="text"/> <input style="width: 20px;" type="text"/></p> <p>001-032; 000 if all zones can be bypassed</p> |
| <p>*11 ENTRY DELAY #2 [06] <input style="width: 20px;" type="text"/> <input style="width: 20px;" type="text"/></p> <p>00-15 times 15 seconds. Maximum 03 for UL Commercial Burglary installations.</p> | <p>*39 ENABLE OPEN/CLOSE REPORT [1] <input style="width: 20px;" type="text"/></p> <p>FOR INSTALLER CODE
1=enable; 0=disable</p> |
| <p>*12 EXIT DELAY #2 [08] <input style="width: 20px;" type="text"/> <input style="width: 20px;" type="text"/></p> <p>00-15 times 15 seconds. Maximum 04 for UL Commercial Burglary installations.</p> | <p>*84 SWINGER SUPPRESSION [03] <input style="width: 20px;" type="text"/> <input style="width: 20px;" type="text"/></p> <p>01-15 alarms; Must be "00" (disabled) for Commercial Fire & UL installations..</p> |
| <p>*13 BELL 1 TIMEOUT [04] <input style="width: 20px;" type="text"/> <input style="width: 20px;" type="text"/></p> <p>01-15 times 2 minutes. Minimum 16 minutes for UL Commercial Burglary and 6 minutes for Commercial Fire installations.</p> | <p>*85 ENABLE DIALER REPORTS [0] <input style="width: 20px;" type="text"/> <input style="width: 20px;" type="text"/> <input style="width: 20px;" type="text"/> <input style="width: 20px;" type="text"/></p> <p>FOR PANICS & DURESS 995 996 999 Duress
1=enable; 0=disable</p> |
| <p>*16 CONFIRMATION OF ARMING DING [0] <input style="width: 20px;" type="text"/></p> <p>1=enable; 0=disable. Must be "1" for UL Commercial Burglary installations.</p> | <p>*87 ENTRY WARNING [0] <input style="width: 20px;" type="text"/></p> <p>1=continuous; 0=3 beeps</p> |
| <p>*22 KEYPAD PANIC ENABLES [001] <input style="width: 20px;" type="text"/> <input style="width: 20px;" type="text"/> <input style="width: 20px;" type="text"/></p> <p>1=enable; 0=disable 995 996 999</p> | <p>*88 BURG. ALARM COMM. DELAY [0] <input style="width: 20px;" type="text"/></p> <p>1=16 seconds; 0=no delay. Must be "0" for UL Commercial Burglary installations.</p> |
| <p>*23 MULTIPLE ALARMS [1] <input style="width: 20px;" type="text"/></p> <p>1=yes; 0=no. Enter 1 for Commercial Fire & UL Commercial Burglary installations.</p> | <p>*90 SEC. SUBS. ACCT # <input style="width: 20px;" type="text"/> <input style="width: 20px;" type="text"/> <input style="width: 20px;" type="text"/> <input style="width: 20px;" type="text"/></p> <p>Enter 00-09; B-F (11-15) [15 15 15 15]</p> |
| <p>*29 QUICK ARM [1] <input style="width: 20px;" type="text"/></p> <p>1=yes; 0=no</p> | <p>1*18 AFFECTS LOBBY [0] <input style="width: 20px;" type="text"/></p> <p>Enter 1 if this partition affects the common lobby; enter 0 if it does not.</p> |
| | <p>1*19 ARMS LOBBY [0] <input style="width: 20px;" type="text"/></p> <p>Enter 1 if arming this partition attempts to arm lobby; enter 0 if it does not</p> |

2nd Page Fields

1*26 PANIC BUTTON OR SPEEDKEY

[00, 00, 00, 00]

A B C D

Enter speedkey macro # (01-35) to use keys A-C for macro. Otherwise enter 00 to use as panic. For D key, enter macro # or 00 to select macro when key is pressed.

1*43 PERM. KEYPAD BACKLIGHT [0]

1=enable; 0=disable When disabled, display lights when any key is pressed, and turns off after period of keypad inactivity.

1*45 EXIT DELAY SOUNDING [0]

1=enable; 0=disable Produces quick beeping during exit delay if enabled.

1*47 CHIME ON BELL 1 [0]

1=enable; 0=disable

1*52 SEND CANCEL IF ALARM + OFF [0]

1=no restriction; 0=within Bell Timeout period only

1*76 ACCESS CONTROL RELAY FOR PART.[00]

Relay will be pulsed for 2 seconds whenever code + [0] is pressed. Enter 00-96; 00=none. Must be "00" for Commercial Fire & UL.

3rd Page Fields

2*05 AUTO-ARM DELAY [15]

Enter the time between the end of the arming window and the start of auto-arming warning period, in values of 1-14 times 4 minutes 00=instant; [15=no auto arm at all]. When this delay expires, the Auto-Arm Warning Period begins.

2*06 AUTO-ARM WARNING PERIOD [15]

This is the time during which the user is warned to exit the premises prior to the auto-arming of the system (beeps every 15 seconds; "ALERT" displayed). Enter 01-15 minutes. 00=instant at end of arming delay .

2*07 AUTO-DISARM DELAY [15]

This is the time between the end of the disarming window and the start of auto-disarming. Enter 01-14 times 4 minutes; 00=instant at end of window; 15=no auto-disarm.

2*08 ENABLE FORCE ARM FOR AUTO-ARM [0]

0=disable; 1=enable.

2*09 OPEN/CLOSE REPORTS BY EXCEPTION [0]

1=enable; 0=disable; If enabled, only openings and closings occurring outside the scheduled opening/closing windows will trigger dialer reports. Opening reports will also be suppressed during the closing window, in order to prevent false reports when the user arms the system and then reenters the premises to retrieve a forgotten item.

2*10 ALLOW DISARMING ONLY DURING [0]

ARMING/DISARMING WINDOWS

See system-wide field 2*11 if enabling field 2*10. This feature adds high security to the installation. 0=disable; 1=enable

2*18 ENABLE GOTO FOR THIS PARTITION [0]

1=Allow log-on from other partitions; 0=disable

2*20 ENABLE J2 TRIGGERS by PARTITION [1]

0=disable for displayed partition; 1=enable for displayed partition

2*22 DISPLAY FIRE ALARMS OF [0]

OTHER PARTITIONS

0=No; 1=Yes

2*23 DISPLAY BURG/PANIC ALARMS OF [0]

OTHER PARTITIONS

10=No; 1=Yes

2*24 DISPLAY TROUBLES OF OTHER [0]

PARTITIONS

0=No; 1=Yes

4th Page Fields

3*57 BELL 2 & AUX. RELAY CONFIRM

ARM. DING 1=enable; [0=disable]

Bell 2 Relay

Must be "1" for UL.

3*59 ENABLE BELL 2 & AUX. RELAY

CHIME ANNUNCIATION 1=enable; [0=disable]

Bell 2 Relay

3*60 BELL 2 & AUX. RELAY TIMEOUT

00-15 times 2 minutes; 00=no timeout [00,00]

Bell 2 Relay

Minimum 16 min. for UL Burglary installations.

SUMMARY OF PROGRAMMING COMMANDS

- **To enter program mode**, enter installer code + [8] + [0] + [0]
- **To set standard defaults**, press *97
- **To change to next page of program fields**, press *94
- **To return to previous set of fields**, press *99
- **To erase account & phone number field entries**, press [*] + field number + [*]
- **To assign zone descriptors**, press #93 + follow menu prompts
- **To add custom words**, press #93 + follow menu prompts
- **To enter Installer's Message**, press #93 + follow menu prompts
- **To exit program mode**, press *99 OR *98: *99 allows re-access to programming mode by installer code. *98 prevents re-access to programming mode by installer code.

Programming With #93 Menu Mode

NOTE: The following field should be preset before beginning: 2*00 Number of Partitions. In addition, receivers should be programmed via Device programming.

After programming all system related programming fields in the usual way, press #93 while still in programming mode to display the first choice of the menu driven programming functions. Press 0 (NO) or 1 (YES) in response to the displayed menu selection. Pressing 0 will display the next choice in sequence.

UL

For UL installations, verify that wireless and audio alarm verification features are disabled.

#93 MENU MODE KEY COMMANDS

The following is a list of commands used while in the menu mode.

#93	Enters Menu mode
[*]	Serves as ENTER key. Press to have keypad accept entry.
#]	Backs up to previous screen.
0	Press to answer NO
1	Press to answer YES
001-009	All data entries are either 2-digit or 3-digit entries.
000	Exits menu mode, back into field programming mode, when entered at the first question for each category.

Menu selections are as follows:

ZONE PROG?
1 = YES 0 = NO

For programming the following:

- Zone Number
- Zone Response Type
- Partition Number for Zone
- Dialer report code for zone
- Bell/aux. relay assignment for zone
- Input Device Type for zone (whether RF, polling loop, etc.)
- Enrolling serial numbers of 5800 Series transmitters & serial polling loop devices into the system.

EXPERT MODE?
1 = YES 0 = NO

Same as Zone Programming except:

- Done with a minimum number of keystrokes.
- Can program wireless keys using pre-defined templates.

REPORT CODE PROG?
1 = YES 0 = NO

For programming the following:

- Alarm report codes for zones
- Restore & supervisory codes
- All other system report codes

ALPHA PROG?
1 = YES 0 = NO

For entering alpha descriptors for the following:

- Zone Descriptors
- Installer's Message
- Custom Words
- Partition Descriptors
- Relay Descriptors

DEVICE PROG?
1 = YES 0 = NO

For defining the following device characteristics for addressable devices, including keypads, RF receivers (5881), output relay modules (4204/4204CF), 4285/4286 VIP Module, ECP long range radio (7820), and vista gateway module:

- Device Address
- Device Type
- Keypad Options (incl. partition assignment)
- RF House ID
- LRR Options (incl. programming radio)

OUTPUT PGM?
1 = YES 0 = NO

For defining output device functions.

RLY VOICE DESCR?
1 = YES 0 = NO

For entering voice descriptors for relays to be used with the 4285/4286 VIP Module.

CUSTOM INDEX ?
1 = YES 0 = NO

For creating custom word substitutes for VIP Module annunciation.

ACCESS POINT PGM
1 = YES 0 = NO

For defining the parameters for each of the VistaKey access point including which group(s) have access through an access point (door). See the *VistaKey-SK Installation and Setup Guide* for the detailed programming instructions.

ACCESS GRP PGM
1 = YES 0 = NO

For defining the capabilities (privileges) for each group of users. See the *VistaKey-SK Installation and Setup Guide* for the detailed programming instructions.

EVENT/ACTION PGM
1 = YES 0 = NO

For defining events and time windows for an access group. See the *VistaKey-SK Installation and Setup Guide* for the detailed programming instructions.

Zone Programming

ZONE PROG?
1=YES 0=NO

Press **1** to enter ZONE PROGRAMMING mode. The following screens will appear. Press [*] to display the next screen. Press # to display a previous screen.

SET TO CONFIRM?
0 = NO 1 = YES 0

This prompt will appear once upon entering Zone Programming. If "Yes," Confirmation prompts will be displayed after the device's Serial and Loop numbers have been entered later.

ENTER ZONE NO.
000 = QUIT 010

Zone 010 entered ↑

Enter the 3-digit zone number to be programmed, as follows:

Protection Zones = 001–032

Relay Zones = 601–616.

ECP Device Supervisory Zones = 800–831.

System Supervisory Zones = 988, 990, 992 (duress), 997 Keypad Panic Zones = 995, 996, 999.

Press [*] to continue.

010 ZT P RC In L
00 1 10 00 1

This display will appear, showing a summary of the zone's current programming. **ZT** = Zone Type, **P** = Partition, **RC** = Report Code, **B** = Bell/Aux. Relay assignment for zone, **In** = the input type of device, and **L** = the device's loop number to which the sensor is connected.

Some devices can support more than one zone by means of individual loops (for example, 5801, 5804, 5816, 5817, etc.). If the zone is not programmed, the display will appear as shown here. If checking a zone's programming, and it is programmed satisfactorily, press [#] to back up one step and enter another zone number, if desired.

Press [*] to continue.

↓ Zone Number

010 ZONE TYPE
PERIMETER 03

Zone Type 03 entry shown

† These are special zone types used with 5800 Series Wireless Pushbutton Units which will result in arming the system in the STAY or AWAY mode, or disarming of the system, depending on the selection made.

Each zone must be assigned a zone type, which defines the way in which the system responds to faults in that zone. Refer to the *Zone Type Definitions* section in the *VISTA-32FB Installation and Setup Guide* for detailed definitions of each zone type. Enter the zone type desired (or change it, if necessary). Available zone types are listed below.

- | | |
|----------------------------------|--|
| 00 = Assign for Unused Zones | 17 = Fire Waterflow |
| 01 = Entry/Exit #1, Burglary | 18 = Fire Supervisory |
| 02 = Entry/Exit #2, Burglary | 19 = 24-Hour Trouble |
| 03 = Perimeter, Burglary | 20 = Arm-STAY† |
| 04 = Interior Follower, Burglary | 21 = Arm AWAY† |
| 05 = Trouble Day/Alarm Night | 22 = Disarm† |
| 06 = 24 Hr. Silent Alarm | 23 = No Alarm Response
(e.g., Relay activation) |
| 07 = 24 Hr. Audible Alarm | 27 = Access Point |
| 08 = 24 Hr. Auxiliary | 28 = MLB Supervision
(if VGM installed) |
| 09 = Fire Without Verification | 29 = Momentary on Exit* |
| 10 = Interior Delay, Burglary | |
| 16 = Fire With Verification | |

* Used with VistaKey door access modules.

Press [★] to continue.

010 PARTITION
1

Enter the partition number (1-2) you are assigning this zone to.
Press [★] to continue.

010 REPORT CODE
1st 03 2nd 12 3C

Enter the report code. The report code consists of 2 hexadecimal digits, each in turn consisting of 2 numerical digits. For example, for a report code of "3C", enter **03** for "3" and **12** for "C." (Refer to *System Communication* section for more information about report codes and report code formats.)

Press [★] to continue.

010 INPUT TYPE
RF Xmitter 3

Note that input types 4 & 5 are valid for certain 5800 Series transmitters only (e.g., 5801, 5802, 5802CP & 5803).

Input type 10 is applicable only if PassPoint ACS is installed with the Vista Gateway Module.

If response type 28 was selected, the input type MUST be 00.

Enter the input device type as follows:

- 00 = not used
- 01 = hardwired
- 03 = supervised RF transmitter (RF type)
- 04 = unsupervised RF transmitter (UR type)
- 05 = RF button-type transmitter (BR type)
- 06 = serial number polling loop device (SL type)
- 07 = DIP switch-type polling loop device
- 08 = right loop of DIP switch type device.
- 09 = keypad input (code + #73)
- 10 = PassPoint ACS input
- 11 = VistaKey Door Status Monitor (DM)*
- 12 = VistaKey Request to Exit (RE)*
- 13 = VistaKey General Purpose (GP*)

Right loops refer to the use of the right loop on a 4190WH Zone Expander Module and/or 4278 PIR, which allow hardwired devices to be monitored by the polling loop.

If programming hardwired, or DIP switch polling loop devices, the summary display appears after completing this entry.

* Only used with VistaKey door access modules.

Press [★] to continue.

010 ACCESS POINT
(00-31) 01

If response type 27, 29 or input types 11 - 13 was selected, this prompt will be displayed. Enter the access point to be controlled by the input type (00-31 for type 27; 01-15 for type 29; 01-15 for types 11 - 13).

Note: This prompt also appears when the input type selected is 06. For standard SL, the selected address must be 00.

Note: If you are using the VistaKey module, the access point must match the address that was set in the module.

010 ENTRY OR EXIT	
	0

If **response type 27 selected**, this prompt will be displayed. Enter whether the access point is an entry or exit point.
0 = entry; **1** = exit

010 BELL/RLY SEL	
	0

Each zone can be assigned to activate either one or both bell outputs and/or the system's auxiliary relay. Enter one of the following assignments:
0=none; 1=Bell 1; 2=Bell 2; 3=Bells 1 and 2; 4=Aux Relay; 5=Bell 1 and Aux Relay; 6=Bell 2 and Aux Relay; 7=Bells 1 and 2 and Aux Relay.
Press [**★**] to continue.

010 V-PLEX RELAY?	
1 = YES 0 = NO	

If **input type 6 was selected**, this prompt is displayed. Enter **1** if using a 4101SN relay module for this zone. Otherwise enter **0**.

010 CONS ECP ADDR	
(00-30)	01

If **input type 09 was selected**, this prompt is displayed. Enter the ECP address of the keypad that is being used for entry/exit for this access point (**00-30**).

010 ACS ZONE #	
(00-31)	01

If **input type 10 was selected**, this prompt is displayed. Enter the PassPoint ACS zone ID that this VISTA zone maps to (**00-31**).

010 INPUT S/N:	L
Axxx-xxxx	1

Serial Number Entry and Loop Number Entry.

a. Transmit two open and close (or close and open) sequences. For a button-type transmitter, press and release the button, wait approximately 4 seconds, then press and release the button a second time.

OR

b. Manually enter the 7-digit serial number printed on a label on the transmitter, using the Alpha keypad. Then press the [**★**] key, the cursor will move to the "L" position. You can edit the loop number, if necessary. When the loop number is acceptable, press [**★**].

OR

c. Press key [C] to copy the last serial number enrolled (used when programming a transmitter with several input loops).

Press [**★**] to accept.

010 INPUT S/N:	L
A022-4064	1

The cursor will then move to the Loop column (L) with the previously entered/transmitted serial number displayed.

Enter the loop number (refer to 5800 Series Transmitters Loop Designations *section*).

To Delete an Existing Serial Number, enter "0" in the loop number field. The serial number will change to "0"s.

If "0" was entered in error, simply re-enter the loop number or press [#], and the serial number will return to the display.

Press [**★**] to accept.

010 INPUT S/N:	L
A022-4064	1

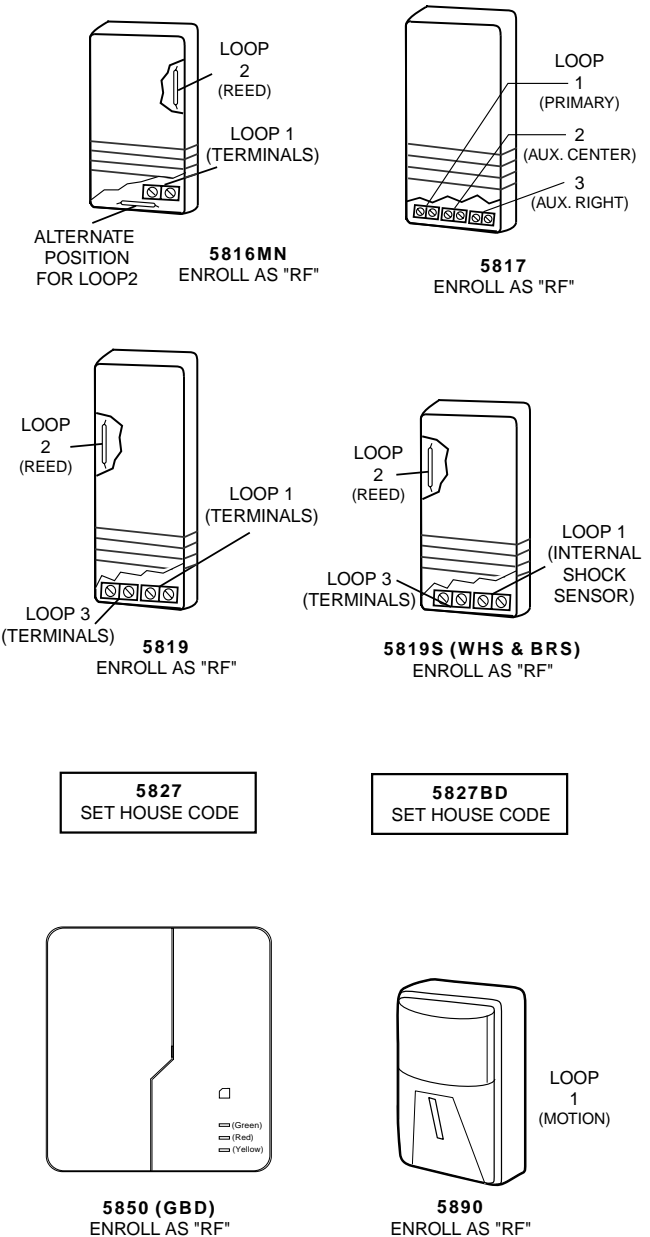
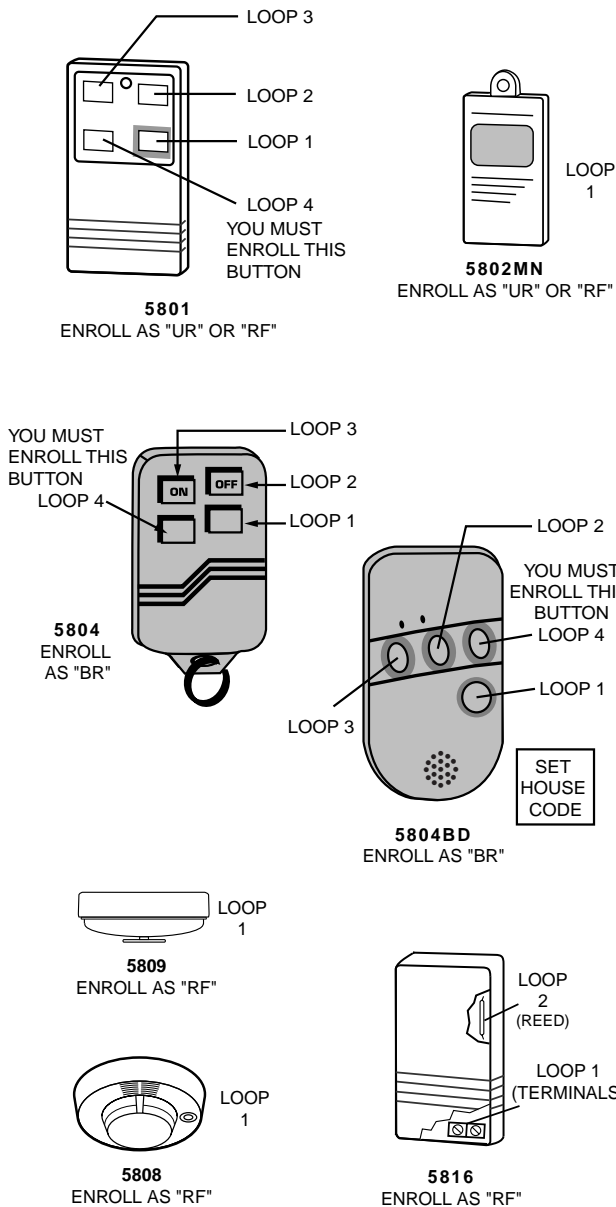
The system will then check for a duplicate serial/loop number combination.

If a duplicate serial/loop number combination is found, the keypad will emit a single long beep, and display the serial number along with a "?" for the loop number, allowing you to re-enter the correct loop number.

If the serial/loop number combination is not a duplicate in the system, a display showing the serial number and loop number entry will appear.

Press [**★**] to continue.

5800 Series Transmitters Loop Designations



Note: For information on any transmitter not shown above, refer to the instructions accompanying that transmitter for details regarding loop numbers, etc.

UL

The 5802MN, 5802MN2, 5804, 5804BD, 5814, 5816TEMP, 5819, 5819WHS & BRS, 5827BD, and 5850 transmitters are not intended for use in UL installations.

XMIT TO CONFIRM
PRESS * TO SKIP

Confirmation Option: This prompt will only appear if you answered "Yes" at the first prompt. The system will enter a confirmation mode so that the operation of the actual programmed input can be confirmed. Activate the loop input or button that corresponds to this zone. At any time during this step, you may press the [*] key on the keypad to save the serial and loop number combination without confirming.

Entd	A022-4063	1
Rcvd	A022-4064	

If the **serial number transmitted does not match the serial number entered**, a display similar to the one at the left will appear. If the loop number does not match, it will also be displayed.

If so, activate the loop input or button on the transmitter once again. If a match is not obtained (i.e., summary display does not appear), press the [#] key twice and then enter or transmit the correct serial number.

010	ZT	P	RC	In	L
01	2	00	RF	1s	

If the serial number transmitted does match the serial number entered, the system will beep 3 times and a summary display will appear, showing that zone's programming. Note that an "s" indicates that a transmitter's serial number has been enrolled.

Press [*] to accept the zone information.

ENTER ZONE NO.	
000 = QUIT	011

The system will now return you to the "ENTER ZONE No." prompt for the next zone.

When all zones have been programmed, enter "000" to quit.

After you have enrolled each wireless device, remove ONE of the serial number labels from that device and affix it in the appropriate column on the worksheets provided in the *Programming Guide*; then enter the other information (zone number, zone type, etc.) relevant to that device.



When you have finished programming all zones, test each using the system's Test Mode. Do not use the Transmitter ID Sniffer Mode for this. The system will check only for transmission of one zone on a particular transmitter, NOT the zones assigned to each additional loop, and also will not verify polling loop type zones.

Expert Mode Zone Programming

Expert Mode allows you to program zones using the minimum number of screens and keystrokes.

Enter the Programming Mode with **[Installer Code] + 8 0 0**

Before programming your zones, do the following:

1. Program field **2*00: Number of Partitions**.
2. Enable your RF Receiver in *Device Programming* menu mode.

To program your zones, press *93 to display the "ZONE PROG?" prompt. Enter "0" (N0) to each prompt until the "EXPERT MODE?" prompt appears.

EXPERT MODE?
1 = YES 0 = NO

Press **1** to enter Expert mode.

SET TO CONFIRM?
0 = NO 1 = YES 0

This prompt will appear once upon entering Expert Mode.

If "Yes," Confirmation prompts will be displayed after the device's Serial and Loop numbers have been entered later.

Zn	ZT	P	RC	In	L
001	03	1	10	HW	-

A summary display will appear, showing zone 1's current programming or default values.

Zn	ZT	P	RC	In	L
010	03	1	10	RF	1s

Enter the desired 3-digit zone number and press [*].

Note: If you want to exit the expert mode, enter "000" + [*].

If an "s" appears after the loop number, it indicates that the transmitter's serial number has been enrolled.

Use the [D] key to enter and duplicate wireless keys (see "Entering Wireless Keys" later)

Zn	ZT	P	RC	In	L
010	03	1	10	RF	-

Enter all zone information except for Loop number, or press "C" to copy the zone information on this screen from last saved zone (including Loop).

- ZT = Zone Type
- P = Partition
- RC = Report Code
- In = Input Device Type
- L = Loop number to which the sensor is connected.

NOTE: Pressing the [C] copies the zone information from the last saved zone, which includes the input type. Verify this information is correct for this zone.

On this screen,

- Use the [A] key to move to the right
- Use the [B] key to move to left and to back up to "ZT" field

Press [★] to accept the existing or newly-entered zone information

ZN	B	M	V	A	C	E	AD
010	2	1	1	0	1	1	01

Enter the remainder of the zone's information, or press the [C] key to copy the zone attributes on this screen from the last saved zone.

- B = Bell/Relay Assignment
- M = Maintenance? (only used if "In" = 3 or 6)
- V = V-plex Relay? (only used if "In" = 6)
- AC= Access Point (only used if ZT = 27, 29 or In = 6, 11, 12, 13)
- E = Entry or Exit? (only used if ZT = 27)
- AD= Address (only used if "In" = 9 or 10)
 - If "In" = 9, enter the Device Address
 - If "In" = 10, enter the PassPoint Zone Number)

NOTE: Pressing the [C] copies the zone attributes from the last saved zone. Verify the attributes for this zone are correct.

NOTE: When response type 29 is selected, the access point (AC) must be from 01-15. When the input type selected is 06, the access point selected must be 00.

On this screen,

- Use the [A] key to move to the right
- Use the [B] key to move to left and to back up to "B" field

Press [★] to accept existing information

010	INPUT	S/N:	L
A	XXX-XXXX	-	-

If you entered RF, BR, UR or SL for the Input Type, this screen displays. Otherwise the summary screen for the next zone displays.

Enter the 7-digit serial number, using one of the following methods:

- a. Transmit two open and close (or close and open) sequences. For a button-type transmitter, press and release the button, wait approximately 4 seconds, then press and release the button a second time.
 - OR
- b. Manually enter the 7-digit serial number printed on a label on the transmitter, using the Alpha keypad. Then press the [★] key, the cursor will move to the "L" position. You can edit the loop number, if necessary. When the loop number is acceptable, press [★].
 - OR
- c. Press key [C] to copy the last serial number enrolled (used when programming a transmitter with several input loops).

Remember, you can use the [A] key to move to the right or the [B] key to move to the left and to back up to the previous screen.

You can also use the [#] key to back up without saving.

010	INPUT	S/N:	L
A	022-4064	1	-

Press [★] to accept the serial number and advance to the "L" position (if method "a" or "c" was used), then enter the loop number.

If necessary, press the [#] key to back up without saving, and re-enter or edit the serial number before pressing [★] to save

The system checks for a duplicate. If a duplicate exists, a long error beep and display the serial number along with a "?" for the loop number, allowing you to re-enter the correct loop number..

010 INPUT S/N:	L
A000-0000	1

To Delete a Serial Number

To delete an existing serial number, enter "0" in the loop number field. The serial number will change to "0"s.

If "0" was entered in error, simply re-enter the loop number or press [#], and the serial number will return to the display.

XMIT TO CONFIRM
PRESS *TO SKIP

The prompt to confirm appears. This prompt will only appear if you answered "Yes" at the "SET TO CONFIRM?" prompt.

The system will enter a confirmation mode so that the operation of the actual programmed input can be confirmed. Activate the loop input or button that corresponds to this zone. At any time during this step, you may press the [*] key on the keypad to save the serial and loop number combination without confirming.

Entd A022-4063	1
Rcvd A022-4064	

If the serial number transmitted does not match the serial number entered, a display similar to the one at the left will appear. If the loop number does not match, it will also be displayed.

If so, activate the loop input or button on the transmitter once again. If a match is not obtained, press the [#] key twice and then enter or transmit the correct serial number.

Activate the button on the wireless key again after re-entering the serial number.

Zn ZT P RC In L
011 00 1 10 00 1

If the serial number transmitted matches the serial number entered, the system will beep 3 times and advance to the summary display for the next zone's programming.

After all the serial numbers have been entered, enter **000** for the zone number to quit.

After you have enrolled each wireless device, remove ONE of the serial number labels from that device and affix it in the appropriate column on the worksheets provided in the *Programming Guide*; then enter the other information (zone number, zone type, etc.) relevant to that device.

Entering Wireless Keys

If the D key was previously pressed to enter defaults for 5804 and/or 5804BD wireless keys, the following screens will appear:

FROM TEMPLATE
1-6 1

Enter Template number (1-6).

1-3 = 5804 templates; 4-6 = 5804BD templates. See the defaults provided for each template in the chart that follows these procedures.

Select from templates. Press [*] to display template (template 1 shown selected).

Note: If necessary, press [#] to back up and re-enter template number.

Press [#] if you want to return to zone attributes screen.

L 01 02 03 04
2T 23 22 21 23 1

When [*] is pressed, the selected template will be displayed.

Top line of display represents loop numbers, bottom line represents zone type.

Press [*] to accept template.

PARTITION
1

Enter Partition number for wireless key.

Press [*] to continue.

ENTER ZONE NO
000 = QUIT 024

The system will search for the highest available, consecutive 4-zone group, (the four zones required for the 5804 and 5804BD), and display the lowest zone number of the group.

If you want to start at a different zone, enter the zone desired and press [*].

If that zone number is displayed, the system has the required number of consecutive zones available, beginning with the zone you entered. If not, the system will again display a suggested zone that can be used.

If the required number of consecutive zones is not available at all, the system will display "00"

Press [*] to accept.

↑
Example of zone number suggested by the system. This indicates that zones 24, 25, 26, and 27 are available.

024 INPUT S/N	L
Axxx-xxxx	1

To enter the serial number:

Press and release a button on the wireless key.

OR

Manually enter the 7-digit serial number printed on the device's label, using the Alpha keypad.

Press [*] to accept serial number. The system will check for duplicate.

If a duplicate exists, a long error beep will sound and the serial number reverts back to all "X"s allowing you to re-enter the serial number.

Use the [A] key to move forward within the screen, and the [B] key to back up

XMIT TO CONFIRM PRESS ★ TO SKIP

If YES was entered at the SET TO CONFIRM prompt previously (see first prompt following entry into the **Expert Programming Mode**), the display on the left will appear. To confirm, activate the button on the wireless key that corresponds to this zone.

Entd A022-4063 Rcvd A022-4064

If the **serial number transmitted does not match the serial number entered**, a display similar to the one at the left will appear.

If so, activate the loop input or button on the transmitter once again. If a match is not obtained, press the [#] key and then enter the correct serial number.

Activate the button on the wireless key again after re-entering the serial number.

ENTER ZONE NO 000 = QUIT 028

If the **serial number transmitted matches the serial number entered**, the system will beep 3 times and revert to the summary display on the "Start Zone No." prompt and will show the lowest numbered zone of the next available 4-zone group (consecutive zones) that is available for programming.

When all zones have been programmed, enter "000" to quit.

After you have enrolled each wireless device, remove ONE of the serial number labels from that device and affix it in the appropriate column on the worksheets provided in the *Programming Guide*; then enter the other information (zone number, zone type, etc.) relevant to that device.

Wireless Key Default Templates

5804				5804BD			
Template 1	Loop	Function	Zone Type	Template 4	Loop	Function	Zone Type
	1	No Response	23		1	No Response	23
	2	Disarming	22		2	No Response	23
	3	Arm AWAY	21		3	Arm AWAY	21
	4	No Response	23		4	Disarming	22
Template 2	Loop	Function	Zone Type	Template 5	Loop	Function	Zone Type
	1	No Response	23		1	No Response	23
	2	Disarming	22		2	Arm STAY	20
	3	Arm AWAY	21		3	Arm AWAY	21
	4	Arm STAY	20		4	Disarming	22
Template 3	Loop	Function	Zone Type	Template 6	Loop	Function	Zone Type
	1	24-Hour Panic	07		1	24-Hour Panic	07
	2	Disarming	22		2	Arm STAY	20
	3	Arm AWAY	21		3	Arm AWAY	21
	4	Arm STAY	20		4	Disarming	22

Report Code Programming

All report codes are entered using # 93 Menu Mode Programming, either through Report Code Programming or through the Zone Programming while entering other zone information. In the VISTA-32FB, reports are divided into six categories. These categories represent the main menu options found in Report Code Programming. Reports and the categories in which they are found are as follows:

ALARM CODES	RESTR, SUPV. CODES (for groups of 16 zones)	SYSTEM GROUP #1
Zone Alarm Reports	Alarm Restore Trouble Trouble Restore Bypass Bypass Restore	Closing (Arm Away) Opening (Disarm) System Low Battery Low Battery Restore AC Loss AC Restore Periodic Test Power Cancel Program Tamper
SYSTEM GROUP #2	SYSTEM GROUP #3	SYSTEM GROUP #4
Arm STAY Time Set, Log Reset Log 50%, 90% Full Event Log Overflow Exit Error by Zone Exit Error by User Recent Close	Early Open Early Close Late Open Late Close Failed to Open Failed to Close Auto-Arm Failed Schedule Change	Fire Walk-Test Start Fire Walk-Test End Off-Normal

The programming sequence that follows assumes that all reports for the system will be entered at one time. In actuality, it is possible to skip from one main menu option to another by pressing **0** (NO) at each main menu option. Main menu options are highlighted in bold text. To enter report codes, do the following:

Enter Program Mode [**Installer Code**] + [**8 0 0**]. Then press **#93**. Enter **0** (NO) at each main menu option until the REPORT CODE PROG prompt is displayed.

REPORT CODE PROG 1 = YES 0 = NO 0	Press 1 (YES) to enter <i>Report Code Programming</i> .
--------------------------------------	--

Zone Alarm Reports

ALARM, ID DIGIT? 1 = YES 0 = NO 0	Press 1 (YES) to enter Alarm Report Codes for zones. Press 0 (NO) to skip to the next main menu option.
--------------------------------------	---

ENTER ZONE NO. 000 = QUIT 001	Enter the zone number for which you are entering the report code. Press [*] to continue.
----------------------------------	--

001 REPORT CODE 1st 00 2nd 00 000	Enter the first digit of the Alarm report code (double-digit entry) and press [*]. Enter the second digit of the Alarm Report Code. Press [*] to continue.
--------------------------------------	---

ENTER ZONE NO. 000 = QUIT 001	Enter the zone number for which the Report Code is being entered. When all zone Alarm Codes have been programmed, enter 000 to Quit. Press [*] to continue.
----------------------------------	--

QUIT REPORT MENU 1 = YES 0 = NO 0	If you have completely finished entering report codes, press 1 (YES) to quit <i>Report Code Programming</i> . If you wish to enter other system report codes, enter 0 (NO). Press [*] to continue.
--------------------------------------	--

Restore/Supervisory Codes

RESTR, SUPV. CODE
1 = YES 0 = NO 0

Press **1** (YES) to enter Restore and Supervisory Codes for zones.

ENTER ZN FOR GRP
000 = QUIT 001

Enter one zone for each group of 16 zones (001-016, 017-032).

ALARM RESTORE
GRP 001-016 00

Enter the first digit of the Alarm Restore Report Code for this group of zones (double-digit entry). The second digit (for two-digit reporting formats) is automatically the ID (second) digit of the Alarm Report Code for each zone (if programmed).
Press **[★]** to continue.

TROUBLE
GRP 001-016 00

Enter the first digit of the Trouble Report Code for this group of zones (double-digit entry). The second digit (for two-digit reporting formats) is automatically the ID (second) digit of the Alarm Report Code for each zone (if programmed).
Press **[★]** to continue.

TROUBLE RESTORE
GRP 001-016 00

Enter the first digit of the Trouble Restore Code (single-digit entry) and press **[★]**. The second digit (for two-digit reporting formats) is automatically the ID (second) digit of the Alarm Report Code for each zone (if programmed).
Press **[★]** to continue.

BYPASS
GRP 001-016 00

Enter the first digit of the Bypass Report Code (double-digit entry) and press **[★]**. The second digit (for two-digit reporting formats) is automatically the ID (second) digit of the Alarm Report Code for each zone (if programmed)..
Press **[★]** to continue.

BYPASS RESTORE
GRP 001-016 00

Enter the first digit of the Bypass Restore Report Code (double-digit entry) and press **[★]**. The second digit (for two-digit reporting formats) is automatically the ID (second) digit of the Alarm Report Code for each zone (if programmed).
Press **[★]** to continue.

ENTER ZN FOR GRP
000 = QUIT 017

Enter one zone for each group of 16 zones. When finished entering Restore and Supervisory Codes for all zone groups, enter **000**.
Press **[★]** to continue.

QUIT REPORT MENU
1 = YES 0 = NO 0

When all of the report codes have been entered, press **1** (YES) to quit *Report Code Programming*. To enter other system report codes, enter **0** (NO).
Press **[★]** to continue.

System Group #1 Codes

SYSTEM GROUP #1?
1 = YES 0 = NO 0

To enter System Group #1 codes, press **1** (YES).

CLOSE
1st 00 2nd 00

Enter the first digit of the Closing (Arm-AWAY) report. Press **[★]**. Enter the second digit of the report. If the user number is desired as the second digit, enter **01** (not necessary for Contact ID or High-Speed formats).
Press **[★]** to continue.

Enter the rest of the codes in the same manner. Other report codes in System Group #1 are:

- Opening (Disarm). Enable this if you desire Callback Requested reports (the panel answers a phone call from the downloader).
- System Low Battery.
- Low Battery Restore.
- AC Loss.
- AC Restore.
- Periodic Test.
- Power.
- Cancel.
- Program Tamper.

Once the report codes have been entered, the system will prompt:

QUIT REPORT MENU
1 = YES 0 = NO 0

If all of the report codes have been entered, press **1** (YES) to quit *Report Code Programming*. To enter other system report codes, enter **0** (NO).
Press **[★]** to continue.

System Group #2 Codes

SYSTEM GROUP #2 ?
1 = YES 0 = NO 0

To enter System Group #2 codes, press **1** (YES).

STAY
1st 00 2nd 00

Enter the first digit of the Arm-STAY report. Press **[*]**. Enter the second digit of the report. If the user number is desired as the second digit, enter **01** (not necessary for Contact ID or High-Speed formats).
Press **[*]** to continue.

Enter the rest of the codes in the same manner. Other codes in System Group #2 are:

- Time Set, Log Reset.
- Log 50%, 90% Full.
- Event Log Overflow.
- Exit Error by Zone.
- Exit Error by User.
- Recent Close.

Once the report codes have been entered, the system will prompt:

QUIT REPORT MENU
1 = YES 0 = NO 0

If all of the report codes have been entered, press **1** (YES) to quit *Report Code Programming*. To enter other system report codes, enter **0** (NO).
Press **[*]** to continue.

System Group #3 Codes

SYSTEM GROUP #3 ?
1 = YES 0 = NO 0

To enter System Group #3 codes, press **1** (YES).

EARLY OPEN
1st 00 2nd 00

Enter the first digit of the Early Opening Report Code. Press **[*]**. Enter the second digit of the report code. If the user number is desired as the second digit, enter **01** (not necessary for Contact ID or High-Speed formats).
Press **[*]** to continue.

Enter the rest of the codes in the same manner. Other codes in System Group #3 are:

- Early Close.
- Late Open.
- Late Close.
- Failed to Open.
- Failed to Close.
- Auto-Arm Failed.
- Schedule Change.

Once the report codes have been entered, the system will prompt:

QUIT REPORT MENU
1 = YES 0 = NO 0

If all of the report codes have been entered, press **1** (YES) to quit *Report Code Programming*. To enter other system report codes, enter **0** (NO).
Press **[*]** to continue.

System Group #4 Codes

SYSTEM GROUP #4 ?
1 = YES 0 = NO 0

To enter System Group #4 codes, press **1** (YES).

WALK TEST START
1st 00 2nd 00

Enter the first digit of the Fire Test Start Report Code. Press **[*]**. Enter the second digit of the report code.
Press **[*]** to continue.

Enter the rest of the codes in the same manner. Other codes in System Group #4 are:

- Walk-Test End.
- Off-Normal.

Once the report codes have been entered, the system will prompt:

QUIT REPORT MENU
1 = YES 0 = NO 0

If all of the report codes have been entered, press **1** (YES) to quit *Report Code Programming*.

QUIT MENU MODE?
1 = YES 0 = NO 0

Enter **1** to exit back to normal Programming mode. Enter **0** to stay in Menu Mode.

Alpha Descriptors Programming

General Information

- A user-friendly English language description/location for all protection zones, Outputs, keypad panics, polling loop short, and RF receiver supervision troubles can be programmed.
- Each description can be composed of a combination of words (up to 3) that are selected from a vocabulary of 244 words stored in memory, and any word can have an s or 's added to it.

NOTE: Due to the use of 3-digit zone numbers, the first word of the descriptor is limited to 6 characters if you want it to fit on the top line of the display.

- In addition, up to 60 installer-defined words can be added to those already in memory. Thus, when an alarm or trouble occurs in a zone, an appropriate description for the location of that zone will be displayed at the keypad.
 - A custom Installer's Message can be programmed for each partition, which will be displayed when the system is ready (e.g., THE PETERSONS).
1. To program alpha descriptors, enter Programming mode, then press **#93** to display ZONE PROG?
 2. Press **0** (NO) twice to display ALPHA PROG?.
 3. Press **1** to enter *Alpha Programming*.
 - There are 6 sub-menu selections that will be displayed one at a time.
 - Press **1** to select the mode desired.
 - Press **0** to display the next mode available. The alpha menu selections are:

ZONE DESCRIP? for entering zone descriptors.

DEFAULT SCREEN? for creating custom message; displayed when system ready.

CUSTOM WORD? for creating custom words for use in descriptors.

PART DESCRIP? for creating 4-character partition names.

EXIT EDIT MODE? Press **1** to exit back to # 93 Menu Mode.

4. Refer to the sections that follow for procedures for adding alpha descriptors.

Zone Descriptors

1. **Select ZONE DESCRIPTOR mode.**

The keypad keys perform the following functions:

- [3]** Scrolls both alphabet and actual words in ascending alphabetical order.
- [1]** Scrolls both alphabet and actual words in descending alphabetical order.
- [2]** Adds or removes an s or 's to a vocabulary word.
- [6]** Switches between alphabet and actual word list; used to accept entries.
- [8]** Saves the zone description in the system's memory.
- [#]** [#] plus zone number displays the description for that zone.

2. **Enter the zone number to which you want to assign a descriptor.**

For example, key **[*]001** to begin entering the description for zone 1 (key **[*]002** for Zone 2, **[*]003** for Zone 3, etc.). The following will be displayed: *ZN 001 A.

Note that the first letter of the alphabet appears after the zone number, and that the zone number is automatically included with the description.

3. **Enter the descriptor for that zone.**

Use one of the following two methods:

(Assume, for example, that the desired description for zone 1 is BACK DOOR.)

- a) Press **[#]** followed by the 3-digit number of the first word from the fixed dictionary shown later in this section (e.g., **[013]** for BACK).

Press **6** in order to accept the word and proceed, or press **8** to store the complete descriptor and exit;

or

- b) Select the first letter of the desired description (note that A is already displayed). Use the **3** key to advance through the alphabet and the **1** key to go backward.

Press **3** key repeatedly until B appears (press **1** to go backwards if the letter was passed), then press **6** to display the first available word beginning with B.

Press **3** repeatedly to advance through the available words until the word BACK is displayed.



To add an s or 's, if needed, press **2**. The first depression adds an s, the second depression adds an 's, the third depression displays no character (to erase the character), the fourth depression adds an s, etc.

4. Accept the word.

To accept the word, press **6**, which switches back to the alphabet list for the next word, or press **8** to store the complete descriptor and then exit.

5. Select the next word.

For selection of the next word (DOOR), repeat step 3a (word #057) or 3b, but selecting the word DOOR.

To accept the word, press **6**, which again switches back to alphabet list.

6. Store the descriptor.

When all desired words have been entered, press **8** to store the description in memory.

To review the zone descriptors, press **[#] + [zone number]** (e.g., #001).

To edit zone descriptors, press **[*] + [zone number]** (e.g., *001).

7. Exit Zone Description Mode: enter 000.

Default Screen (Custom Message Display)

Normally, when the system is in the disarmed state, the following display is present on the keypad.

```
****DISARMED****
READY TO ARM
```

Part or all of the above message can be modified to create a custom Installer Message for each partition. For example, ****DISARMED**** on the first line or READY TO ARM on the second line could be replaced by the installation company name or phone number for service. Note that there are only 16 character spaces on each of the two lines. To create a custom display message, proceed as follows:

1. Select Default Screen Mode.

The keypad will ask for the partition number for this message.

Enter the partition number. Press **[*]** to accept entry.

The following will appear:

```
****DISARMED****
READY TO ARM
```

A cursor will be present at the extreme left of the first line (over the first star). Press **6** to move the cursor to the right and **4** to move the cursor to the left. Press **7** to insert spaces or erase existing characters.

2. Create the message.

For example, to replace READY TO ARM with the message SERVICE 424-0177, proceed as follows:

Press **6** to move the cursor to the right, and continue until the cursor is positioned over the first location on the second line.

Press **3** to advance through the alphabet to the first desired character (in this case, S). Press **1** to go backward, when necessary. When the desired character is reached, press **6**.

The cursor will then move to the next position, ready for entry of the next character (in this example, E). When the cursor reaches a position over an existing character, press **3** or **1** to advance or back up from that character in the alphabet.

Proceed in this manner until all characters in the message have been entered.

3. Save the message.

Store the new display message in memory by pressing **8**.

4. The system will ask for a new partition number.

Enter **0** to quit or **1-2** for a new partition number.

Custom Words

Up to 60 installer-defined words can be added to the built-in vocabulary. Each of the 60 words can actually consist of several words, but bear in mind that a maximum of 10 characters can be used for each word string.

1. Select CUSTOM WORD Mode. The keys perform the following functions:
 - [3] Advances through alphabet in ascending order.
 - [1] Advances through alphabet in descending order.
 - [6] Selects desired letter; moves the cursor one space to the right.
 - [4] Moves the cursor one space to the left.
 - [7] Inserts a space at the cursor location, erasing any character at that location.
 - [8] Saves the new word in the system's memory.
 - [*] Returns to Description Entry Mode.
2. Enter the custom word number (01-60) to be created.
For example, when creating the first word (or word string), enter **01**; when creating the second word, enter **02**, and so on. A cursor will now appear at the beginning of the second line.
3. Type the word using one of the following methods:
 - a) Press **[#] + [the 2-digit entry for the first letter to be displayed]** (e.g., [65] for A).
When the desired character appears, press **6** to select it. The cursor will then move to the right, in position for the next character. Press **[#] + [the 2-digit entry for the next letter of the word]**.
or
 - b) Press **3** to advance through the list of symbols, numbers, and letters.
Press **1** to move back through the list.
When the desired character has been reached, press **6** to select it. The cursor will then move to the right, in position for the next character.
4. Repeat step 3 to create the desired custom word (or words).
Press **4** to move the cursor to the left, if necessary.
Press **7** to enter a blank (or to erase an existing character).
Each word or word string cannot exceed 10 characters.
5. Save the word by pressing 8.
The CUSTOM WORD? Prompt will be redisplayed. The custom word (or string of words) will be automatically added to the built-in vocabulary at the end of the group of words beginning with the same letter.
Custom words are retrieved as word numbers 255 to 314 for words 1 to 60, respectively, when using method 3a to enter alpha descriptors.
When using method 3b to enter alpha descriptors, each word will be found at the end of the group of words that begin with the same letter as it does.
6. Repeat steps 2 through 6 to create up to 60 custom words (or word strings).
7. Exit Custom Word Mode by entering **00** at the CUSTOM WORD prompt.

Partition Descriptors

1. Select Part. DESCRIPT. Mode. The system will ask for the partition number desired. Enter the number as a single-key entry **1-2**.
2. Follow the same procedure as for custom words, except that partition descriptors are limited to 4 characters (e.g., WHSE for warehouse).

Alpha Descriptor Vocabulary

(For Entering Alpha Descriptors. To select a word, press [#] followed by the word's 3-digit number.)

NOTE: This vocabulary is not to be used for relay voice descriptors. See the RELAY VOICE DESCRIPTORS section when programming relay voice descriptors.

- | | | | | |
|------------------------|-------------------------|--------------------------|----------------------|-----------------------|
| 000 (Word Space) | • 054 DEN | 107 HOUSE | 158 PHOTO | • 211 TOOL |
| • 001 AIR | 055 DESK | 108 INFRARED | 159 POINT | 212 TRANSMITTER |
| • 002 ALARM | • 056 DETECTOR | • 109 INSIDE | 160 POLICE | 213 TRAP |
| 003 ALCOVE | 057 DIALER 1 | 110 INTERIOR | 161 POOL | 214 TRIGGERS |
| 004 ALLEY | 058 DIALER 2 | 111 INTRUSION | • 162 POWER | 215 ULTRA |
| 005 AMBUSH | • 059 DINING | 112 JEWELRY | 163 QUAD | • 216 UP |
| 006 ANTENNA | 060 DISCRIMINATOR | • 113 KITCHEN | 164 RADIO | • 217 UPPER |
| • 007 AREA | 061 DISPLAY | • 114 LAUNDRY | • 165 REAR | • 218 UPSTAIRS |
| • 008 APARTMENT | 062 DOCK | • 115 LEFT | 166 RECREATION | • 219 UTILITY |
| 009 ART | • 063 DOOR | 116 LEVEL | 167 REFRIG | 220 VALVE |
| • 010 ATTIC | 064 DORMER | • 117 LIBRARY | 168 REFRIGERATION | 221 VAULT |
| 011 AUDIO | • 065 DOWN | • 118 LIGHT | 169 RELAY 1 | 222 VIBRATION |
| 012 AUX | • 066 DOWNSTAIRS | 119 LINE | 170 RF | 223 VOLTAGE |
| 013 AUXILIARY | 067 DRAWER | 120 LIQUOR | • 171 RIGHT | 224 WALL |
| • 014 BABY | • 068 DRIVEWAY | • 121 LIVING | • 172 ROOM | 225 WAREHOUSE |
| • 015 BACK | 069 DRUG | • 122 LOADING | 173 ROOF | 226 WASH |
| • 016 BAR | • 070 DUCT | 123 LOCK | 174 SAFE | • 227 WEST |
| 017 BARN | • 071 EARTH | 124 LOOP | 175 SCREEN | • 228 WINDOW |
| • 018 BASEMENT | 072 EAST | 125 LORRA | 176 SENSOR | 229 WINE |
| • 019 BATHROOM | 073 ELECTRIC | 126 LOW | • 177 SERVICE | • 230 WING |
| • 020 BED | 074 EMERGENCY | • 127 LOWER | • 178 SHED | 231 WORK |
| • 021 BEDROOM | 075 ENTRY | • 128 MACHINE | 179 SHOCK | 232 XMITTER |
| 022 BELL | • 076 EQUIPMENT | 129 MAGNETIC | • 180 SHOP | 233 YARD |
| 023 BELL 1 | 077 EXECUTIVE | 130 MAIDS | 181 SHORT | 234 ZN-1 |
| 024 BELL 2 | • 078 EXIT | 131 MAIN | 182 SHOW | • 235 ZONE |
| • 025 BLOWER | 079 EXTERIOR | • 132 MASTER | • 183 SIDE | • 236 0 |
| • 026 BOILER | • 080 FACTORY | 133 MAT | 184 SKYLIGHT | • 237 1 |
| 027 BOTTOM | 081 FAILURE | • 134 MEDICAL | 185 SLIDING | • 238 1ST |
| 028 BOX | 082 FAMILY | 135 MEDICINE | • 186 SMOKE | • 239 2 |
| 029 BREAK | • 083 FATHERS | 136 MICROWAVE | 187 SONIC | • 240 2ND |
| • 030 BUILDING | • 084 FENCE | 137 MONEY | • 188 SONS | • 241 3 |
| 031 BURNER | 085 FILE | 138 MONITOR | • 189 SOUTH | • 242 3RD |
| 032 CABINET | • 086 FIRE | • 139 MOTHERS | 190 SPRINKLER | • 243 4 |
| • 033 CALL | • 087 FLOOR | • 140 MOTION | 191 STAMP | • 244 4TH |
| 034 CAMERA | 088 FLOW | 141 MOTOR | • 192 STATION | • 245 5 |
| 035 CAR | 089 FOIL | 142 MUD | 193 STEREO | • 246 5TH |
| 036 CASE | • 090 FOYER | • 143 NORTH | 194 STORE | • 247 6 |
| 037 CASH | 091 FREEZER | 144 NURSERY | • 195 STORAGE | • 248 6TH |
| 038 CCTV | • 092 FRONT | • 145 OFFICE | 196 STORY | • 249 7 |
| 039 CEILING | 093 FUR | 146 OIL | 197 STRESS | • 250 7TH |
| 040 CELLAR | 094 FURNACE | • 147 OPEN | 198 STRIKE | • 251 8 |
| • 041 CENTRAL | 095 GALLERY | 148 OPENING | 199 SUMP | • 252 8TH |
| 042 CIRCUIT | • 096 GARAGE | • 149 OUTSIDE | 200 SUPERVISED | • 253 9 |
| 043 CLIP | • 097 GAS | 150 OVERFLOW | 201 SUPERVISION | • 254 9TH |
| • 044 CLOSED | 098 GATE | 151 OVERHEAD | 202 SWIMMING | 255 Custom Word 1 |
| 045 COIN | • 099 GLASS | 152 PAINTING | 203 SWITCH | to |
| 046 COLD | 100 GROUND | • 153 PANIC | 204 TAMPER | 314 Custom Word 60 |
| 047 COATROOM | 101 GUEST | 154 PASSIVE | 205 TAPE | |
| 048 COLLECTION | 102 GUN | • 155 PATIO | 206 TELCO | |
| 049 COMBUSTION | • 103 HALL | 156 PERIMETER | 207 TELEPHONE | |
| • 050 COMPUTER | • 104 HEAT | • 157 PHONE | 208 TELLER | |
| 051 CONTACT | 105 HIGH | • 209 TEMPERATURE | 209 THERMOSTAT | |
| • 052 DAUGHTERS | 106 HOLDUP | | | |
| 053 DELAYED | | | | |

CHARACTER (ASCII) CHART (For Adding Custom Words)

32 (space)	42 *	52 4	62 >	72 H	82 R
33 !	43 +	53 5	63 ?	73 I	83 S
34 "	44 ,	54 6	64 @	74 J	84 T
35 #	45 -	55 7	65 A	75 K	85 U
36 \$	46 .	56 8	66 B	76 L	86 V
37 %	47 /	57 9	67 C	77 M	87 W
38 &	48 0	58 :	68 D	78 N	88 X
39 '	49 1	59 ;	69 E	79 O	89 Y
40 (50 2	60 <	70 F	80 P	90 Z
41)	51 3	61 =	71 G	81 Q	

***Notes:** This factory-provided vocabulary of words is subject to change. Bulleted words in **bold face type** are those that are also available for use by the 4285/4286 VIP Module. If using a VIP Module, and words other than these are selected for alpha descriptors, the Voice Module will not provide annunciation of those words.

Device Programming

This menu is used to program keypads, receivers and relay modules.

From Data Field Programming Mode, press **#93** to display "ZONE PROG?". Press **0** repeatedly to display "DEVICE PROG?".

DEVICE PROG?

1=YES 0=NO

Press **1** to enter *Device Programming*.

DEVICE ADDRESS

01-31, 00=QUIT

The device address identifies the device to the control. Enter the 2-digit device address number to match the device's physical address setting (**01-30**).

Press [*****] to accept entry.

Note: Device Address 04 must be used for the 4285/4286 Voice Module, if one is installed. If not, it can be used for another device type.



Device Address **00** is always set as an alpha keypad assigned to Partition 1 with no sounder suppression options, and these settings cannot be changed.

DEVICE TYPE

Select the type of addressable device as follows:

0 = device not used

1 = alpha keypad (6139/6139R)

3 = RF receiver (5881)

4 = output relay module (4204/4204CF)

5 = Voice (VIP) Module (4285/4286)

6 = Long Range Radio

8 = Fire Display

9 = Vista Gateway Module (VGM)

Press [*****] to accept entry.

Alpha Keypad

CONSOLE PART.

If device type 1 (alpha keypad) is selected, this prompt will appear. Enter the addressable device's default partition number (01 to maximum number of partitions programmed for system in field 2*00). This is the primary partition for which the device is intended to be used. Enter **9** to make this keypad a "master" keypad for the system.

Press [*****] to accept entry.

SOUND OPTION

If device type 1 (alpha keypad) is entered, this prompt will appear. Keypads can be individually programmed to suppress arm/disarm beeps, entry/exit beeps and chime mode beeps. This helps prevent unwanted sounds from disturbing users in other areas of the premises.

Enter a number **00-03** for the keypad sounding suppression options desired for the keypad as follows:

00 = no suppression.

01 = suppress arm/disarm & entry/exit beeps.

02 = suppress chime mode beeps only.

03 = suppress arm/disarm, entry/exit **and** chime mode beeps.

Press [*****] to accept entry.

KEYPAD GLBL?

If device type 1 (alpha keypad) is entered, this prompt will appear. Each keypad can give users with access to multiple partitions the ability to arm and disarm those partitions from it. To enable this keypad for global arming/disarming, enter **1**. To prevent the ability to use this keypad for global arming/disarming, enter **0**.

Press [*****] to accept entry.

RF Expander

RF EXPANDER

HOUSE ID XX

If device type 3 (RF Receiver) is selected, this prompt will appear. Enter the 2-digit House ID (**00-31**). This is required if using a wireless keypad (5827/5827BD).

Press [*****] to accept entry.

Output Relay Module

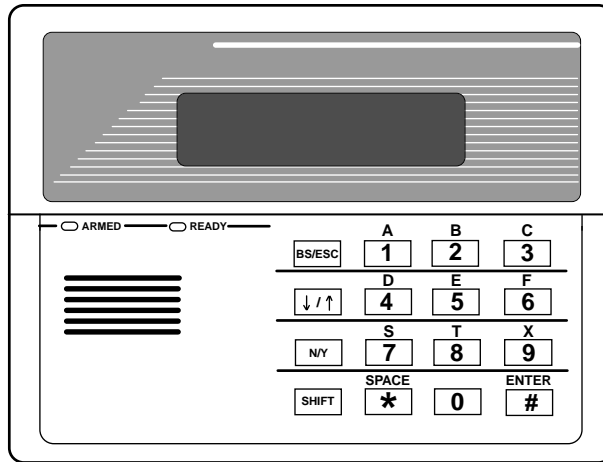
SUPERVISED CF?

If device type 4 (relay module) is selected, this prompt will appear. Enter **1** if the unit is a 4204CF. If not, enter **0**. If 1 is entered, only Relay 1 (Output A) and relay 3 (Output B) on each module are able to be programmed for functions. This module is usually used to add two additional supervised bell outputs to the system.

Press [*****] to accept entry.

Long Range Radio

If device type 6 is chosen, the 6139 Keypad will function similar to the 7720PLRR Programming Tool. See *Figure 25-2* for the functions of the keys on the 6139.



SHIFT function indicated by turning on READY LED.

Figure 25-2 6139 Key Functions for Programming the ECP Radio

Each key has two possible functions: a normal function and a SHIFT function. To perform a normal key function, simply press the desired key. To perform a SHIFT key function, press SHIFT key, then press desired function key.

Normal and SHIFT key Functions:

Key	Normal Key Function	SHIFT Key Function
BS/ESC	[BS]: Press to delete entry Also, can reset EEPROM defaults *	[ESC]: Press to quit Program Mode.
↓/↑	[↓]: Scroll down programming	[↑]: Scroll up programming
N/Y	[N]: Press for "NO" answer.	[Y]: Press SHIFT-Y for "YES" answer
SHIF T	Press before pressing a SHIFT key function. Will light READY LED. LED goes out once a key is pressed. Press again for each SHIFT function desired.	
1/A	[1]: For entering the number 1	[A]: Used for entering C.S. ID number
2/B	[2]: For entering the number 2	[B]: Used for entering C.S. ID number
3/C	[3]: For entering the number 3	[C]: Used for entering C.S. ID number
4/D	[4]: For entering the number 4	[D]: Used for entering C.S. ID number
5/E	[5]: For entering the number 5	[E]: Used for entering C.S. ID number
6/F	[6]: For entering the number 6	[F]: Used for C.S. ID & FAST Mode
7/S	[7]: For entering the number 7	[S]: Press to display diagnostic status
8/T	[8]: For entering the number 8	[T]: Press to send TEST messages
9/X	[9]: For entering the number 9	[X]: Press to reset the 7820
/SPACE	[]: Not used with 7820	[SPACE]: Not used with 7820
0	[0]: For entering the number 0	No SHIFT function
#/ENTER	[#/ENTER]: Press to accept entries	No SHIFT function

* Active only when the "REVIEW?" prompt is displayed.

The 6139 Keypad will display the following prompts, which are sent by the Long Range Radio transmitter to the control. **Note: These prompts are for the 7820 Radio only. If you are using a different radio, refer to the radio's instructions for the correct prompts.**

DEVICE ADDRESS

Enter the device address of the radio. The default address is 3.

ID #	(1234)
------	--------

Enter the 4-digit customer account number, **0001-9999**. This ID number will appear in the messages generated by the radio. Messages generated by the panel and transmitted by the radio will contain the ID number programmed into the panel. The radio and the panel should have the same ID number, if possible.



If a different 4-digit customer account number is used in the radio than is programmed into the alarm control, the radio will transmit radio-specific messages (power-on reset, AC fail, etc.) using the radio customer number, and alarm messages using the control panel's customer number. If these numbers are different, you will be billed for two AlarmNet radio accounts.

ODD [Y/N]	(N)
-----------	-----

Enter **Y** for odd system flag; **N** for even system flag.

Alarmnet (Y/N)	(Y)
----------------	-----

Enter **Y** if an AlarmNet installation. Enter **N** for private system users (skip to Question 7).

CS ID	(11)
-------	------

Enter the primary central station's system ID number, **1-7F** (will not be displayed for private system users).

BAT PRESENT [Y/N]	(N)
-------------------	-----

Enter **Y** if optional battery will be used. **Must be Y for UL installations (a battery must be installed).**

USE RADIO # [Y/N]	(N)
-------------------	-----

If **Y** is selected, the Radio ID number will replace the panel Subscriber ID in panel-generated messages with the Radio ID number.
If **N** is selected, the radio will send panel-generated messages with the panel Subscriber ID number.

2 ND CS ID	(12)
-----------------------	------

This must be programmed with a value, even if it is the same as the primary central station. The alarm panel has the option to send a selected message to the second central station.

REVIEW (Y/N)	(N)
--------------	-----

Enter **Y** to review the programming options and to ensure that the correct responses have been made. Parameters can be changed during review.
Enter **N** to end programming session.

Fire Display

RST FIRE PTN?.

If device type 8 (Fire Display) is selected, this prompt will appear.
Press **0** to disable FSA's Silence/Reset button (default).
Press **1** to enable FSA's Silence/Reset button to Silence the fire alarm system when pressed once (Silence only).
Press **2** to enable FSA's Silence/Reset button to Silence and then Reset the fire alarm system when pressed twice.

VIP Module and VISTA Gateway Module

MODULE PART.

If device type 5 (VIP Module) or type 9 (VGM) is selected, this prompt will appear. Enter the partition number **1-2** in which the module is located.
Press **[*]** to accept entry.
Press **00 + [*]** to exit Menu Mode.
Press ***99** to exit Program Mode.

Output Programming

The system supports up to 96 outputs. Outputs can be used to perform many different functions and actions. Each output must be programmed to begin one of four types of ACTIONS at a designated START event, and end that ACTION at a designated STOP event. The options used to start and stop these devices are described below, followed by the actual screen prompts and available entries.

The letter(s) in parentheses after each function described below, such as (A) after ACTION, are those that appear in the various summary displays of programmed data during programming.

ACTION (A) The "ACTION" of the device is how the device will respond when it is activated by the "START" programming. You may want the device to activate momentarily, to pulse on and off continuously, or to remain activated until some other event occurs to stop it. There are five different choices of actions:

- ACTIVATE for 2 SECONDS and then reset.
- ACTIVATE and REMAIN ACTIVATED until stopped by some other event.
- PULSE ON and OFF until stopped by some other event (do not use with an FSA device).
- NO RESPONSE when the device is not used.
- TOGGLE on and off alternately with each activation of event.

START (STT) The "START" programming determines when and under what conditions the device will be activated. The following START options are available:

- 1) **EVENT (EV)** is the condition (alarm, fault, trouble) that must occur to a zone or group of zones (zone list) in order to activate the device. These conditions apply *only* when a zone list is used. The different choices for "EVENT" are listed below and in "Output Devices Programming" later in this section.
ZONE LIST (ZL) is a group of zones to which the "EVENT" applies in order to activate a particular device. Note that there are a total of 15 zone lists that can be programmed; when the selected EVENT (alarm, fault or trouble) occurs in *any* zone in the selected "Start" ZONE LIST (01-15), activation of the selected device will START.
- 2) **ZONE #** A specific zone going into alarm, fault, trouble, or restore (Event programming) can be used to start the Output action. Enter the 3-digit zone number (000-032).
- 3) **ZONE TYPE/SYSTEM OPERATION (ZT)**. If all zones to be used to start the device have the same response type, and there are no other zones of this type which are *not* to activate this device, then "ZONE TYPE" may be used instead of using a "ZONE LIST" and "EVENT" to activate the device. If a System Operation, such as "DISARMING" or "ANY FIRE ALARM" is to activate the device, the appropriate choice would also be entered under the "ZONE TYPE" option.
The "ZONE TYPE/SYSTEM OPERATION" option functions independently of the "EVENT/ZONE LIST" combination.
If a specific "ZONE TYPE" is chosen, any zone of that response type going into alarm, trouble, or fault will cause the device to activate as selected in "ACTION." If the same "ZONE TYPE" is also chosen for the STOP programming, any zone of that type that *restores* will de-activate the device.
If a "SYSTEM OPERATION" is chosen, that operation will cause the device to activate as selected in "ACTION." The different choices for "ZONE TYPE" and "SYSTEM OPERATION" are listed in "Output Devices Programming" later in this section, and on the Programming Form.
- 4) **PARTITION No. (P)**. The device's "Start" ZONE TYPE/SYSTEM OPERATION may be limited to an occurrence on one partition (1-2), or any partition (0).

STOP (STP): The "STOP" programming determines when and under what conditions the device will be de-activated. The following options are available:

- 1). **RESTORE ZONE LIST (ZL)**. If a "ZONE LIST" is used as the "Stop" event, the device will de-activate when *all* the zones in that list restore from a previous fault, trouble, or alarm condition. This will occur regardless of what is programmed to "START" the device; therefore, a "RESTORE ZONE LIST" would normally only be used when a "ZONE LIST" is used to start the device.
- 2). **ZONE TYPE/SYSTEM OPERATION (ZT)**. Instead of using a "RESTORE ZONE LIST," a specific zone (response) type or system operation action can be selected to de-activate the device. If a specific "ZONE TYPE" is chosen, any zone of that response type that restores from a previous alarm, trouble, or fault condition will cause the device to de-activate. If a "SYSTEM OPERATION" is chosen, that operation will cause the device to de-activate. The different choices for "ZONE TYPE" and "SYSTEM OPERATION" are listed in "Output Devices Programming" later in this section, and in the Programming Form. **The "ZONE TYPE/SYSTEM OPERATION" option functions independently of the "[RESTORE]ZONE LIST" option.**
- 3) **PARTITION No. (P)**. The device's "Stop" Zone Type/System Operation may be limited to an occurrence on one partition (1-2), or on any partition (0).

Output Devices Programming

From Data Field Programming Mode, press **#93** to display the "ZONE PROG?" prompt. Press **0** (NO) to each menu option until the "OUTPUT PGM?" prompt appears. Press **1** (YES).

While in this mode, press **[*]** to advance to next screen. Press **[#]** to backup to the previous screen.

ENTER OUTPUT # (00=QUIT) 01	Enter the Output identification number 01-96 . This is a reference number only, used for identification purposes. The actual module address and relay number on the module are programmed in the last two prompts. Press [*] to continue.
02 A EV ZL ZT P STT 0 0 00 00 0	Press [*] to continue.
02 A ZL ZT P STOP 0 00 00 0	The keypad will display a summary STOP screen. Press [*] to continue.
02 OUTPUT ACTION NO RESPONSE 0	The Output Action is the way in which the Output will respond when activated by the "start" event. Enter the desired action for this Output as follows: 0 =not used; 1 =close for 2 secs.; 2 =stay closed; 3 =pulse on/off; 4 = toggle on/off alternately
02 START EVENT NOT USED 0	A Output may be activated either by an Event used in conjunction with a Zone List, and/or by a Zone Type/System Operation. If using an Event/Zone List combination, enter the event code as follows: 0 =not used; 1 =alarm; 2 =fault; 3 =trouble; 4 =restore If not using a Zone List to activate the Output, enter 0 . Press [*] to continue.
02 START: ZN LIST 00	A Zone List is a set of zones that can be used to initiate the start or stop Output action. If a zone list is being used to start this Output action, enter the Zone List number 1-15 . If a zone list is not being used, enter 0 . Press [*] to continue.
02 START: ZONE # 000	A specific zone can be used instead of or in addition to an Event/Zone List or Zone Type/System Operation combination to start the Output action. Enter the 3-digit zone number. Press [*] to continue.
02 START: ZN TYPE NO RESPONSE 00	A Zone Type/System Operation can be used instead of or in addition to an Event/Zone List combination or a specific zone to start the Output action. If a Zone Type/System Operation is being used, enter the 2-digit code as listed below. Press [*] to continue.

Choices for Start/Stop Zone Types and System Operation:

00 = No Response (Not Used) 01 = Entry/Exit #1 02 = Entry/exit #2 03 = Perimeter 04 = Interior Follower 05 = Trouble Day/Alarm Night 06 = 24-Hr. Silent 07 = 24-Hr. Audible 08 = 24-Hr. Auxiliary 09 = Fire Alarm or Trouble 10 = Interior W/Delay 16 = Fire With Verification 17 = Fire Waterflow **** 18 = Fire Supervisory 19 = 24-Hr. Trouble 20 = Arming-STAY 21 = Arming-AWAY 22 = Disarming ([Code] + Off) 23 = No Alarm Response	27 = Access Point (allows more than one relay to be controlled by activation if access point request) 28 = MLB Supervision 29 = Momentary on Exit *** 30 = On Second Code + Off 31 = End of Exit Time 32 = Start of Entry Time 33 = Any Burglary Alarm 34 = Code + [#] + 71 Key Entry 35 = Code + [#] + 72 Key Entry 36 = At Bell Timeout ** 37 = 2 Times Bell Timeout ** 38 = Chime 39 = Fire Alarm 40 = Bypassing 41 = AC Power Fail 42 = System Battery Low 43 = Communication failure	44 = RF Low Battery 45 = Polling Loop Failure 47 = Console Failure 51 = RF Receiver Failure 52 = Kissoff 54 = Fire Zone Reset 55 = Disarm + 1 Minute 56 = XX Minutes (enter XX in field 1*74) * 57 = YY Seconds (enter YY in field 1*75)* 58 = Duress 60 = Audio Alarm Verification (must be selected for both START and STOP operation) 61 = Code + [#] + 67 Key Entry 62 = Bell 2 Timeout 63 = Aux. Relay Timeout
--	---	--

*Stop condition only, **Or at Disarming, whichever occurs earlier, ***Used with VistaKey door access modules,

**** If zone type 17 (waterflow) is selected, an event of fault or alarm should be used as the output start option.



If using options 56 or 57 (usually as the STOP Zone Type), data fields 1*74 and 1*75 for the respective relay timeouts for minutes and seconds must be programmed.

02 START: ACS PT (00-31) 00	If the start zone type selected was 27 (access point), this prompt will be displayed. Enter the access point (00-31) which will start the Output action. Press [★] to continue.
02 START: PARTN ANY PARTITION 0	If the starting event will be limited to occurring on a specific partition, enter the partition number (1-2) in which the start event will occur. Enter 0 for any partition. Press [★] to continue.
02 STOP: ZN LIST 00	If a zone list is being used to stop this Output action, enter the zone list number 1-15 . The restore of a zone on the Zone List will stop the Output. If a zone list is not being used, enter 0 . Press [★] to continue.
02 STOP: ZN TYPE NO RESPONSE 00	If a Zone Type/System Operation is being used to stop the Output action, enter the 2-digit code as listed in the Choices for Start/Stop System Operation chart. Press [★] to continue.
02 STOP: ACS PT (00-31) 00	If the stop zone type selected was 27 (access point), this prompt will be displayed. Enter the access point (00-31) which will stop the Output action. Press [★] to continue.
02 STOP: PARTN ANY PARTITION 0	This is the partition to which the stop condition will be limited. Enter 0 for any partition. Enter 1-2 for specific partition number. Press [★] to continue.
02 OUTPUT GROUP 00	Outputs may be grouped for common activation by time-driven events (commands 06-10). Enter 00 (no group) or 01-15 for a specific group number. Press [★] to continue.
02 RESTRICTION 1=YES 0=NO 0	The system may have some devices, which are not intended to be under end user control, such as Outputs activating fire doors or machinery. Enter 1 if the end user will be restricted from accessing this Output group. Press [★] to continue.
02 OUTPUT TYPE V-PLEX 0	Enter 0 for V-Plex (polling loop) devices. Enter 1 for (ECP) relay modules (4204/4204CF). Enter 3 for (FSA) Fire System Annunciator. Press [★] to continue.
02 V-PLEX ZONE # 000	For polling loop trigger outputs (4101SN), enter the protection zone number (001-032) linked to each output, if used. Be sure to enroll the module's serial number (see Zone Programming prompt earlier in this section). Press [★] to continue.
02 ECP ADDRESS 00	If 1 was selected for relay modules (4204/4204CF), enter the actual relay module's address (01-15) as set by its DIP switches. Up to 8 modules can be installed in a system. Press [★] to continue.
02 MODULE RELAY# 0	For 4204 Relay Outputs, enter the specific relay number on that module (1-4) . For 4204CF outputs, enter only module relay number 1 (Output A) or relay number 3 (Output B) . These are the only two programmable relays on the 4204CF Module. Press [★] to continue. The keypad will display the Start and Stop summary screens again. Press [★] to continue.
02 ECP ADDRESS 00	If 3 was selected for FSA, enter the actual FSA's address (08-23) as set by its DIP switches. Up to 4 modules can be installed in a system. Press [★] to continue.

01 LED #	
	00

Enter the LED number on the FSA module (**01-08 for FSA-8; 01-24 for FSA-24**).
Press [*****] to continue.
The keypad will display the Start and Stop summary screens again.
Press [*****] to continue.

When all output devices have been programmed, enter **00** at the "ENTER OUTPUT #." prompt.

If defining a zone list, continue to the next section. If not, enter **00 + [*****]** at the next two prompts. You will then be asked "Quit Menu Mode?" Enter **1** for "Yes," **0** for "No." Then enter ***99** to exit programming completely.

If supervision of the 4204CF Relay Output is desired, enter a response type for that output's corresponding supervisory zone. This is equal to 600 + [Relay ID No.]. For example, if you are programming Relay ID No. 1, the relay's supervisory zone would be 601. Program this zone for response type 05 (Day/Night) in *Zone Programming*.

Zone List Programming

After all Outputs have been programmed, upon entering **00** at the "ENTER OUTPUT #." prompt, you will be asked to enter a zone list. If a zone list number was used to start or stop a Output, you must define the zones belonging to that list as follows:

ENTER Zn LIST ?	
00=QUIT	00

Enter the zone list number **01-15**. Enter **00** to quit.

01 ADD ZONE #	
000=QUIT	000

Using 3-digit entries, enter each zone to be included in this zone list. Press [*****] after each zone number is entered.

When all zones have been entered, enter **000**.

Press [*****] to continue.

01 Del Zn LIST ?	
1=YES 0=NO	0

Enter **0** to save the zone list entered. Enter **1** to delete that zone list.

01 DEL ZONES ?	
1=YES 0=NO	0

Enter **1** to delete one or more zones in that zone list. Enter **0** if no changes are necessary. If **1** is entered, the following screen will appear, otherwise the "Enter Zone LIST" prompt will reappear.

01 Zn to DELETE ?	
000=QUIT	000

Enter each zone number to be deleted from the zone list, pressing [*****] after each number.

VIEW Zn LIST ?	
00=QUIT	00

This will appear if **00** is pressed at the "Enter Zone LIST" prompt. Enter the zone list number that you wish to view.

Press [*****] to continue.

01 ASSIGNED ZONE	
000=QUIT	000

Press [*****] to scroll through all zones in that list. Enter **000 + [*****]** to quit.

Press [**1**] to exit Menu Mode.

Press ***99** to exit Program Mode.

Relay Voice Descriptors

If using the 4285/4286 VIP Module, voice descriptors can be programmed for outputs 1-16 (even though the system has 96 outputs, only 1-16 can have a Relay Voice Descriptor programmed). These descriptors will be announced by the voice module when accessing the Outputs via the # 70 Relay Access Mode via telephone.

Each voice descriptor can consist of up to three words selected from the Relay Voice Descriptors and Custom Word Substitutes Vocabulary list (later in this section).



The index numbers from this vocabulary list are to be used for relay voice descriptors only. For normal system voice annunciation (e.g., alarms, troubles, status), use the highlighted words in the alpha vocabulary list in the *Alpha Programming* part of this guide.

To enter relay voice descriptors, do the following:

1. From Data Field Programming Mode, press **#93** to display the "ZONE PROG?" prompt.
2. Press **0** (NO) to each menu option until the "RLY VOICE DESCR?" prompt is displayed. Follow the instructions below. While in this mode, press [*****] to advance to next screen. Press [**#**] to back up to previous screen.

RLY VOICE DESCR?
1=YES 0=NO 0

Press **1** to program voice descriptors for relays.

ENTER RELAY NO.
00=QUIT 01

Enter the 2-digit relay number (**01-16**) for the Output desired, or enter **00** to quit Relay Voice Descriptor Programming Mode.
Press [**★**]

01 ENTER DESC d1

From the Relay Voice Descriptors and Custom Word Substitutes Vocabulary list, enter the 3-digit index number for the first word of the relay descriptor phrase.
Press [**★**] to accept entry.

01 ENTER DESC d2

From the Relay Voice Descriptors and Custom Word Substitutes Vocabulary list, enter the 3-digit index number for the second word of the relay descriptor phrase. If second word is not desired, press **000**.
Press [**★**] to accept entry.

01 ENTER DESC d3

From the Relay Voice Descriptors and Custom Word Substitutes Vocabulary list, enter the 3-digit index number for the third word of the relay descriptor phrase. If third word is not desired, press **000**.
Press [**★**] to accept entry. The "ENTER RELAY NO#." prompt will appear. Enter the next relay number to be programmed. When all output devices have been programmed, enter **00** to quit. Enter **★99** to exit Program Mode.

Relay Voice Descriptors and Custom Word Substitutes Vocabulary

Word	Index	Word	Index	Word	Index	Word	Index	Word	Index
Air.....	116	Daughter's	208	Front.....	087	No	165	Side.....	153
Alarm.....	255	Den	052	Garage	023	North.....	146	Six	075
And.....	067	Detector	128	Gas.....	138	Not.....	012	Sixth.....	219
Apartment.....	117	Device.....	060	Glass.....	139	Off.....	011	Smoke.....	024
Appliances.....	161	Dim	163	Hall.....	050	Office	147	Son's.....	223
Area.....	118	Dining	031	Heat.....	010	On.....	058	South.....	155
Attic	119	Door.....	016	Inside	209	Open.....	148	Stairs.....	006
		Down.....	008	Kitchen	022	One.....	070	Station.....	156
Baby	120	Downstairs.....	184	Laundry	140	Open.....	148	Storage	157
Back	121	Driveway	130	Left	027	Outside	210	Sun.....	154
Bar.....	122	Duct	131	Library	141	Panic.....	013	System	062
Basement.....	021	East	132	Light	019	Partition	090	Temperature	158
Bathroom.....	051	Eight	077	Living.....	030	Patio	149	Third.....	159
Battery.....	053	Eighth	221	Loading	142	Phone	061	Three.....	072
Bed.....	092	Equipment.....	133	Lower	094	Power	063	Tool	213
Bedroom.....	015	Exit.....	004	Machine.....	143	Pump	166	Two	071
Blower	123	Factory.....	134	Master	144	Rear	088	Up	025
Boiler.....	124	Father's.....	211	Medical.....	014	Right	028	Upper	187
Bright.....	162	Fence.....	135	Mother's	212	Room	018	Upstairs.....	183
Building	125	Fifth.....	218	Motion	145	's	007	Utility	185
Burglary.....	039	Fire	040	Nine.....	078	Second	056	West.....	215
		First	136	Ninth.....	222	Service.....	150	Window	017
Call	009	Five.....	074			Seven	076	Wing.....	216
Central.....	089	Floor	029			Seventh	220		
Chime	054	Four	073			Shed	151		
Closed	126	Fourth	217			Shop	152	Zero.....	069
Computer.....	127	Foyer	137					Zone.....	002
Console.....	066								

Custom Word Substitutes for VIP Module Annunciation

A substitute word can be programmed for each of the 60 custom words used in your alpha zone descriptions. The VIP Module will announce this substitute word in place of the custom word that is displayed on the alpha keypad. For example, an alarm display of "John's Bedroom" could be announced as "Son's Bedroom," since there is no annunciation for the custom word "John." Note that if a substitute word is not assigned, the VIP Module will not annunciate the zone descriptor at all, but will only annunciate the zone number.

To enter custom word substitutes, do the following:

1. From Data Field Programming Mode, press **#93** to display the "ZONE PROG?" prompt.
2. Press **0** (NO) to each menu option until the "CUSTOM INDEX ?" prompt is displayed.

CUSTOM INDEX ? 1=YES 0=NO 0

Enter **1** at this prompt.

CUSTOM WORD NO. 00=QUIT

Enter the custom word number (**01-60**) for which a voice substitute is desired. Enter **00** to quit this Programming Mode.

Press [**★**] to accept entry.

01 ENTER INDEX #

Enter the 3-digit substitute word index number from the Relay Voice Descriptors and Custom Word Substitutes Vocabulary list found in the *Relay Voice Descriptors* part of this section.

Press [**★**] to accept entry.

The "CUSTOM WORD NO." prompt will be displayed. Enter the next custom word number to be substituted or enter **00** to quit.

System Layout Worksheets

As with any security system, you should first define the installation. This includes determining how many partitions will be used, how many zones per partition, and how many users per partition. You will also need to determine what peripheral devices will be needed, and basic system options such as exit/entry delays, etc. The control panel itself should be located in an area that will facilitate wire runs to all partitions, and will allow access to power and telephone circuits.

To help you lay out a partitioned system, use the following worksheet. This will further simplify the programming process.

PARTITIONS				
Partition #	Descriptor (4 char max)	Prim. Sub. #	Sec. Sub. #	Alpha Default Message (32 character maximum)
Partition 1				
Partition 2				
Keyswitch Arming Partition Assignment (1-2 or 9):				
Wireless Keypad Partition Assignment (1-2):				
Voice Module Partition Assignment (1-2):				
Use Partition Descriptor (yes/no)?				
Common Lobby Partition Assignment (1-2):				

COMMUNICATION OPTIONS BY PARTITION		
Option	Part. 1	Part. 2
Swinger Suppression Count 00-15; 00=no suppression		
Cancel Report After Disarm		
Dialer Reports for Panic (* + 1)		
Dialer Reports for Panic (# + 3)		
Dialer Reports for Panic (* + #)		
Dialer Reports for Duress		
Burglary Alarm Communications Delay (16 sec.)		

SYSTEM DEFINITIONS BY PARTITION (enter values or yes/no)		
Option	Part. 1	Part. 2
Entry Delay #1 (15-225 seconds):		
Exit Delay #1 (15-225 seconds):		
Entry Delay #2 (15-225 seconds):		
Exit Delay #2 (15-225 seconds):		
Quick Arming		
Multiple Alarms per Arming		
Console Panic for zone 995 (★ + 1)		
Console Panic for zone 996 (# + 3)		
Console Panic for zone 999 (★ + #)		
Allow Sign-on (GOTO function)		
Non-Bypassable Zone*		
Sounder Timeout Duration for Bell 1 (2 min. increments)		
Sounder Timeout Duration for Bell 2 & Aux Rly (2 min. increments)		
Console Annunciation During Entry**		
Console Annunciation During Exit		
Confirmation of Arming Ding for Bell 1		
Confirmation of Arming Ding for Bell 2 & Aux Rly		
Chime on Bell 1		
Chime on Bell 2 & Aux Relay		
Access Control Relay (field 1★76)		
Affects Lobby (check partitions that apply)		
Arms Lobby (check partitions that apply)		
Displays Fire Alarms of Other Partitions		
Displays Burg & Panic Alarms of Other Partitions		
Displays Troubles of Other Partitions		

*Can be any zone 001-032.

**no= 3 beeps yes=continuous

PRINTER OPTIONS	
12 or 24 hour Time format	
Printer On-Line (yes/no)	
*1200 or 300 baud Printer Baud Rate	

*Note: Must be 1200 if using pager interface

EVENT LOG TYPES		
Option	No	Yes
Alarm		
Trouble		
Bypass		
Open/Close		
System		
Test		

DEVICES (keypads, 4204, rf receivers, vip module, lrr, vgm)

Device Address	Type	Home Part	Sound Opt	Supv CF?	Keypad Global	Device Address	Type	Home Part	Sound Opt	Supv CF?	Keypad Global
00						16					
01						17					
02						18					
03						19					
04						20					
05						21					
06						22					
07						23					
08						24					
09						25					
10						26					
11						27					
12						28					
13						29					
14						30					
15						31					

Type:

- 0 = Device Not Used
- 1 = Alpha Console
- 3 = RF Receiver
- 4 = Output Relay Module
- 5 = Voice Module
- 6 = Long Range Radio
- 8 = Fire Display
- 9 = Vista Gateway Module

Console Sounder Options:

- 00 = No Suppression
- 01 = Suppress Arm/Disarm and Entry/Exit Beeps
- 02 = Suppress Chime Mode Beeps Only
- 03 = Suppress Arm/Disarm, Entry/Exit and Chime Mode Beeps

Defaults:

Addresses 00-01 = Alpha Keypad; No Suppression

ACCESS CODES & USER DEFINITIONS FOR PARTITIONS 1-2

4-digit Security Code	Access Group 0; 1-8	Partition 1				Partition 2			
		2-Digit User #	Global Arm?	Auth. Level	Open/Close	2-Digit User #	Global Arm?	Auth. level	Open/Close

- Authority Levels:
- 1=master (arm, disarm, bypass, and/or modify lower level users)
 - 2=manager (arm, disarm, bypass, and/or modify lower level users)
 - 3=operator A (arm, disarm, bypass)
 - 4=operator B (arm, disarm)
 - 5=operator C (arm, disarm only if system was armed with this code)
 - 6=duress code (arm, disarm, triggers silent panic alarm)

ZONE DEFINITIONS FOR ZONES 001-027

Zone No.	Zone Type	Parti- tion (1-2)	Input Type (1-13)	Serial # Device Loop	Bell/Relay Activation	Report Code	Zone Information (part numbers) & Alpha Descriptor (3 words max.)
01							
02							
03							
04							
05							
06							
07							
08							
09							
010							
011							
012							
013							
014							
015							
016							
017							
018							
019							
020							
021							
022							
023							
024							
025							
026							
027							

ZONE DEFINITIONS FOR ZONES 028-032

Zone No.	Zone Type	Partition (1-2)	Input Type (1-13)	Serial # Device Loop	Bell/Relay Activation	Report Code	Zone Information (part numbers) & Alpha Descriptor (3 words max.)
028							
029							
030							
031							
032							

ZONE DEFINITIONS FOR KEYPAD PANIC ZONES 995, 996, & 999

Zone No.	Zone Type	Enter yes/no for each partition-field *22		Bell/Rel Act.	Report Code	Zone Information (part numbers) & Alpha Descriptor (3 words max.)
		1	2			
995						
996						
999						

ZONE DEFINITIONS FOR SYSTEM ZONES 970-975; 988; 990 & 997

Zone No.	Zone Type	Report Code	Zone Information (part numbers) & Alpha Descriptor (3 words max.)
970			
971			
972			
973			
974			
975			
988			
990			
997			

ZONE DEFINITIONS FOR RELAY SUPERVISORY ZONES 601-616

Zone No.	Zone Type	Report Code	Zone Information (part numbers) & Alpha Descriptor (3 words max.)	Zone No.	Zone Type	Report Code	Zone Information (part numbers) & Alpha Descriptor (3 words max.)
601				609			
602				610			
603				611			
604				612			
605				613			
606				614			
607				615			
608				616			

ZONE DEFINITIONS FOR SUPERVISORY OF ECP DEVICE ZONES 800-831

Zone No.	Zone Type	Report Code	Zone Information (part numbers) & Alpha Descriptor (3 words max.)	Zone No.	Zone Type	Report Code	Zone Information (part numbers) & Alpha Descriptor (3 words max.)
800				816			
801				817			
802				818			
803				819			
804				820			
805				821			
806				822			
807				823			
808				824			
809				825			
810				826			
811				827			
812				828			
813				829			
814				830			
815				831			

Zone Types: 00=zone not used 06=24 hour silent 16=fire w/verification 21=arm away
01=entry/exit 1 07=24 hour audible 17=fire waterflow 22=disarm
02=entry/exit 2 08=24 hour auxiliary 18=fire supervisory 23=no alarm response
03=perimeter 09=supervised fire 19=24 hour trouble 27=access control
04=interior (follower) 10=interior (delay) 20=arm stay 28=MLB supervision
05=day/night burglary 29=Momentary on exit

Input Types: 00=not used 08=right loop dip switch polling loop
01=hardwired 09=keypad input
03=supervised RF transmitter 10=PassPoint ACS input
04=unsupervised RF transmitter 11=VistaKey Door Status Monitor (DM)
05=RF button transmitter 12=VistaKey Request to Exit (RE)
06=serial number polling loop 13=VistaKey General Purpose (GP)
07=dip switch type polling loop

Bells/Auxiliary Relay Activation:

0=none 4=auxiliary relay
1=bell 1 5=bell 1 & auxiliary relay
2=bell 2 6=bell 2 & auxiliary relay
3=bells 1 & 2 7=bells 1 & 2 & auxiliary relay

Output Devices Programming

Applicable only if Relays (4204/4204CF), FSA Modules, or V-Plex Relays (4101SN) are used.

Output Devices – Programmed in the #93 Menu Mode in the Output Programming Section. Fill in the required data on the worksheet below and follow the procedure in the installation instructions as you enter the data during the displays and prompts that appear in sequence.

Notes: For 4204/4204CF and FSA, the Device Programming section must be programmed for the device address. Set the dip switches on the device for that address.

OUTPUT DEV #	A	S T A R T					S T O P			Output Group	Restrict	0=V-Plex 1=4204 3=FSA	V-Plex Zone # or Dev Add 4204 or FSA	Relay # for 4204 or LED # for FSA
		EV/ZL	Zone	ZT / P	ZL	ZT / P								
1														
2														
3														
4														
5														
6														
7														
8														
9														
10														
11														
12														
13														
14														
15														
16														
17														
18														
19														
20														

OUTPUT DEVICES WORKSHEET (cont'd)

OUTPUT DEV #	A	S T A R T				S T O P			Output Group	Restrict	0=V-Plex 1=4204 3=FSA	V-Plex Zone # or Dev Add 4204 or FSA	Relay # for 4204 or LED # for FSA
		EV/ZL	Zone	ZT / P	ZL	ZT / P							
21													
22													
23													
24													
25													
26													
27													
28													
29													
30													
31													
32													
33													
34													
35													
36													
37													
38													
39													
40													
41													
42													
43													
44													
45													

OUTPUT DEVICES WORKSHEET (cont'd)

OUTPUT DEV #	A	S T A R T				S T O P			Output Group	Restrict	0=V-Plex 1=4204 3=FSA	V-Plex Zone # or Dev Add 4204 or FSA	Relay # for 4204 or LED # for FSA
		EV/ZL	Zone	ZT / P	ZL	ZT / P							
46													
47													
48													
49													
50													
51													
52													
53													
54													
55													
56													
57													
58													
59													
61													
62													
63													
64													
65													
66													
67													
68													
69													
70													
71													

OUTPUT DEVICES WORKSHEET (cont'd)

OUTPUT DEV #	A	S T A R T				S T O P			Output Group	Restrict	0=V-Plex 1=4204 3=FSA	V-Plex Zone # or Dev Add 4204 or FSA	Relay # for 4204 or LED # for FSA
		EV/ZL	Zone	ZT / P	ZL	ZT / P							
72													
73													
74													
75													
76													
77													
78													
79													
80													
81													
82													
83													
84													
85													
86													
87													
88													
89													
90													
91													
92													
93													
94													
95													
96													

A = DEVICE ACTION 0 = No Response; 1 = Close for 2 sec; 2 = Close and stay closed; 3 = Pulse on and off; 4 = Toggle alternately between START and STOP events.

EV = EVENT 0 = Not used; 1 = Alarm; 2 = Fault; 3 = Trouble; 4 = Restore

ZL = ZONE LIST 1-15, 0 = Not Used.

"START" ZONE LIST: Upon alarm, fault, or trouble of ANY zone in this list, device action will START.

"STOP" ZONE LIST: Upon restore of ALL zones on this list, device action will STOP. It need not be same list as used for START.

ZT = ZONE TYPE/SYSTEM OPERATION

Choices for Start/Stop Zone Types and System Operation:

00 = No Response (Not Used)	27 = Access Point (allows more than one relay to be controlled by activation if access point request)	44 = RF Low Battery
01 = Entry/Exit #1	28 = MLB Supervision	45 = Polling Loop Failure
02 = Entry/exit #2	29 = Momentary on Exit ***	47 = Console Failure
03 = Perimeter	30 = On Second Code + Off	51 = RF Receiver Failure
04 = Interior Follower	31 = End of Exit Time	52 = Kissoff
05 = Trouble Day/Alarm Night	32 = Start of Entry Time	54 = Fire Zone Reset
06 = 24-Hr. Silent	33 = Any Burglary Alarm	55 = Disarm + 1 Minute
07 = 24-Hr. Audible	34 = Code + [#] + 71 Key Entry	56 = XX Minutes (enter XX in field 1*74) *
08 = 24-Hr. Auxiliary	35 = Code + [#] + 72 Key Entry	57 = YY Seconds (enter YY in field 1*75) *
09 = Fire Alarm or Trouble	36 = At Bell Timeout **	58 = Duress
10 = Interior W/Delay	37 = 2 Times Bell Timeout **	60 = Audio Alarm Verification (must be selected for both START and STOP operation)
16 = Fire With Verification	38 = Chime	61 = Code + [#] + 67 Key Entry
17 = Fire Waterflow ****	39 = Fire Alarm	62 = Bell 2 Timeout
18 = Fire Supervisory	40 = Bypassing	63 = Aux. Relay Timeout
19 = 24-Hr. Trouble	41 = AC Power Fail	
20 = Arming-STAY	42 = System Battery Low	
21 = Arming-AWAY	43 = Communication failure	
22 = Disarming ([Code] + Off)		
23 = No Alarm Response		

* Stop condition only
 ** Or at Disarming, whichever occurs earlier
 *** Used with VistaKey door access modules.
 **** If zone type 17 (waterflow) is selected, an event of fault or alarm should be used as the output start option.

P = PARTITION NO. 1-2, 0 = Any

ZONE LISTS FOR OUTPUT DEVICES – Programmed in the #93 Menu Mode in the Output Programming Section. Fill in the required data on the worksheet below and follow the procedure in the installation instructions as you enter the data during the displays and prompts that appear in sequence. Up to 15 zone lists may be created.

Note: Record desired zone numbers below. More or fewer boxes than shown may be needed, since any list may include *any* or *all* of system's zone numbers.

Zone List 1: Started or stopped by zone numbers (enter 000 to end entries).

<input type="text"/>	<input type="text"/>	<input type="text"/>	<input type="text"/>	<input type="text"/>	<input type="text"/>	<input type="text"/>
<input type="text"/>	<input type="text"/>	<input type="text"/>	<input type="text"/>	<input type="text"/>	<input type="text"/>	<input type="text"/>

Zone List 2: Started or stopped by zone numbers (enter 000 to end entries).

<input type="text"/>	<input type="text"/>	<input type="text"/>	<input type="text"/>	<input type="text"/>	<input type="text"/>	<input type="text"/>
<input type="text"/>	<input type="text"/>	<input type="text"/>	<input type="text"/>	<input type="text"/>	<input type="text"/>	<input type="text"/>

Zone List 3: Started or stopped by zone numbers (enter 000 to end entries).

<input type="text"/>	<input type="text"/>	<input type="text"/>	<input type="text"/>	<input type="text"/>	<input type="text"/>	<input type="text"/>
<input type="text"/>	<input type="text"/>	<input type="text"/>	<input type="text"/>	<input type="text"/>	<input type="text"/>	<input type="text"/>

Zone List 4: Started or stopped by zone numbers (enter 000 to end entries).

<input type="text"/>	<input type="text"/>	<input type="text"/>	<input type="text"/>	<input type="text"/>	<input type="text"/>	<input type="text"/>
<input type="text"/>	<input type="text"/>	<input type="text"/>	<input type="text"/>	<input type="text"/>	<input type="text"/>	<input type="text"/>

Zone List 5: Started or stopped by zone numbers (enter 000 to end entries).

<input type="text"/>	<input type="text"/>	<input type="text"/>	<input type="text"/>	<input type="text"/>	<input type="text"/>	<input type="text"/>
<input type="text"/>	<input type="text"/>	<input type="text"/>	<input type="text"/>	<input type="text"/>	<input type="text"/>	<input type="text"/>

Zone List 6: Started or stopped by zone numbers (enter 000 to end entries).

<input type="text"/>	<input type="text"/>	<input type="text"/>	<input type="text"/>	<input type="text"/>	<input type="text"/>	<input type="text"/>
<input type="text"/>	<input type="text"/>	<input type="text"/>	<input type="text"/>	<input type="text"/>	<input type="text"/>	<input type="text"/>

Zone List 7: Started or stopped by zone numbers (enter 000 to end entries).

<input type="text"/>	<input type="text"/>	<input type="text"/>	<input type="text"/>	<input type="text"/>	<input type="text"/>	<input type="text"/>
<input type="text"/>	<input type="text"/>	<input type="text"/>	<input type="text"/>	<input type="text"/>	<input type="text"/>	<input type="text"/>

Zone List 8: Started or stopped by zone numbers (enter 000 to end entries).

<input type="text"/>	<input type="text"/>	<input type="text"/>	<input type="text"/>	<input type="text"/>	<input type="text"/>	<input type="text"/>
<input type="text"/>	<input type="text"/>	<input type="text"/>	<input type="text"/>	<input type="text"/>	<input type="text"/>	<input type="text"/>

Zone List 9: Started or stopped by zone numbers (enter 000 to end entries).

<input type="text"/>	<input type="text"/>	<input type="text"/>	<input type="text"/>	<input type="text"/>	<input type="text"/>	<input type="text"/>
<input type="text"/>	<input type="text"/>	<input type="text"/>	<input type="text"/>	<input type="text"/>	<input type="text"/>	<input type="text"/>

Zone List 10: Started or stopped by zone numbers (enter 000 to end entries).

Zone List 11: Started or stopped by zone numbers (enter 000 to end entries).

Zone List 12: Started or stopped by zone numbers (enter 000 to end entries).

Zone List 13: Started or stopped by zone numbers (enter 000 to end entries).

Zone List 14: Started or stopped by zone numbers (enter 000 to end entries).

Zone List 15: Started or stopped by zone numbers (enter 000 to end entries).

Scheduling Menu Prompts

To program schedules, enter Scheduling program mode by pressing [User Code] + # + 80 to display the first choice of the menu driven programming functions. Only users with an Installer or Master level user code may enter the #80 mode.

Press 0 (NO) or 1 (YES) in response to the displayed menu selection. Pressing 0 will display the next choice in sequence. Menu selections are as follows:

Time Window ? 1 Yes 0 = No 0

For defining up to 20 time windows each with a start and a stop time programmed by entering the hours and minutes.

O/C Schedules ? 1 Yes 0 = No 0

For defining the daily open and close schedules for the 2 partitions. Each partition can be programmed with an opening and closing window for each day of the week and holidays.

Holidays ? 1 Yes 0 = No 0

For defining up to 16 holidays for which partitions they apply.

Timed Events ? 1 Yes 0 = No 0

For defining up to 20 time driven events with the following parameters:

- Time window
- Action desired
- Action specifier
- Activation time
- Days of the week

Access Sched. ? 1 Yes 0 = No 0

For defining the limitation of access schedules for the user codes. Each schedule can be programmed with two window for each day of the week and holidays

#80 & #81 MENU MODE KEY COMMANDS

The following is a list of commands used while in the menu mode.

#80 or #81	Enters Menu mode
[*]	Serves as ENTER key. Press to have keypad accept entry.
[#]	Backs up to previous screen.
0	Press to answer NO
1	Press to answer YES
01-09	All data entries are either 2-digit entries.
00	Exits menu mode, back normal operation mode, when entered at the first question for each category.

Scheduling Worksheets

Time Windows Definitions Worksheet. The system provides 20 time windows that are defined with start and stop times. They are programmed in the #80 Menu Mode. Fill in the required data on the worksheet below and follow the procedure in the installation instructions as you enter the data during the displays and prompts that appear in sequence.

Time Window Number	Start Time (HH:MM)	Stop Time (HH:MM)
1		
2		
3		
4		
5		
6		
7		
8		
9		
10		
11		
12		
13		
14		
15		
16		
17		
18		
19		
20		

(Keep this worksheet handy, as you will be asked for a given time window number later in this section).



Since the time windows are shared among all partitions, it is important to make sure that changing a time window does not adversely affect desired actions in other partitions.

Daily Open/Close Schedule Worksheet: Using the time windows previously defined, fill in the required data on the worksheet below and follow the procedure in the installation instructions as you enter the data during the displays and prompts that appear in sequence.

Part	Mon		Tues		Wed		Thur		Fri		Sat		Sun		Hol	
	Op	Cl	Op	Cl	Op	Cl	Op	Cl	Op	Cl	Op	Cl	Op	Cl	Op	Cl
1																
2																

Holiday Schedule Worksheet: The system provides up to 16 holidays that can be assigned for the system. Each holiday can be assigned to any combination of partitions. Fill in the required data on the worksheet below and follow the procedure in the installation instructions as you enter the data during the displays and prompts that appear in sequence.

HOL	Partition		
	Month/Day	1	2
1	/		
2	/		
3	/		
4	/		
5	/		
6	/		
7	/		
8	/		
9	/		
10	/		
11	/		
12	/		
13	/		
14	/		
15	/		
16	/		

Time-Driven Event Worksheet: The system provides up to 20 time driven events that can be programmed for the system. Fill in the required data on the worksheet below and follow the procedure in the installation instructions as you enter the data during the displays and prompts that appear in sequence.

Sched Num.	Time Window	Day(s)								Action Desired	Action Specifier	Activation Time
		M	T	W	T	F	S	S	H			
1												
2												
3												
4												
5												
6												
7												
8												
9												
10												
11												
12												
13												
14												
15												
16												
17												
18												
19												
20												

Below is a list of the "Action" codes (desired actions) used when programming time driven events. Note that these codes are independent of the "Output codes" programmed during the #93 Menu Mode—Output Programming mode. **If using Time Driven Events to control Outputs, the following menu items must first be programmed using #93 Menu Mode - Output Programming:**

Enter Output No.	(reference identification number)
Output Group	(if applicable)
Restriction	
Output Type	(V-Plex, 4204/4204CF, or FSA)
Zone No.	(V-Plex)
ECP Address	(4204/4204CF or FSA)
Relay No.	(4204/4204CF)
LED No.	(FSA)

Relay commands:

Action Specifier for commands 01-05 is Relay #, for commands 06-10 is Relay Group #.

01 = Relay On	02 = Relay Off
03 = Relay Close for 2 seconds	04 = Relay Close XX minutes (field 1*74)
05 = Relay Close YY seconds (field 1*75)	06 = Relay Group On
07 = Relay Group Off	08 = Relay Group Close for 2 seconds
09 = Relay Group Close XX minutes (field 1*74)	10 = Relay Group Close YY seconds (field 1*75)

Arm/Disarm commands:

Action Specifier for commands 20-24 is Partition(s), Activation times 1 (Beginning), 2 (End), 3 (During) are the only valid choices for auto-arming and disarming functions.

20 = Arm-Stay	21 = Arm Away
22 = Disarm	23 = Force Arm Stay (Auto-bypass faulted zns)
24 = Force Arm Away (Auto-bypass faulted zns)	

Bypass commands:

Action Specifier for commands 30-31 is Zone List #, Activation times 1 (Beginning), 2 (End), 3 (During) are the only valid choices for bypass commands.

30 = Auto bypass - Zone list	31 = Auto unbypass - Zone list
------------------------------	--------------------------------

Open/Close Windows:

Action Specifier for commands 40-41 is Partition(s), for 42 is Access Group, and for 50 no specifier is programmed. Activation time 3 (During) is the only valid choice for these commands.

40 = Enable Opening Window	41 = Enable Closing Window	42 = Enable Access Window
50 = Off-Normal Reminder (Starts local keypad beeping if fire off-normal condition exists)		

Access Control Commands (to be used with VistaKey modules only)

Action Specifier for commands 55-60 is Access Point, for 61-66 is Group, for 67-72 is Partition, and for 73-74 is Trigger.

55 = Access Point Grant	56 = Access Point Grant with Override
57 = Access Point Protect	58 = Access Point Bypass
59 = Access Point Lock	60 = Access Point Exit
61 = Access Point Group Grant	62 = Access Point Group Grant with Override
63 = Access Point Group Protect	64 = Access Point Group Bypass
65 = Access Point Group Lock	66 = Access Point Group Exit
67 = Access Point Partition Grant	68 = Access Point Partition Grant with Override
69 = Access Point Protect by Partition	70 = Access Point Bypass by Partition
71 = Access Point Lock by Partition	72 = Access Point Exit by Partition
73 = Access Point Trigger On	74 = Access Point Trigger Off

Additional Commands

Action Specifier for command 75 is Macro, for 76 is Script, for 77-78 is Group, and for 79 no specifier is programmed.

75 = Run Macro	76 = Run Script
77 = Access Point Group Enable	78 = Access Point Group Disable

Activation time:

Refers to when the action is to take place relative to the time window.

1 = Beginning of time window
2 = End of time window
3 = During time window active period only (On at beginning of window, off at end).
4 = Beginning and end of time window (ex. -Coffee break buzzer).

Limitation of Access Worksheet The system provides up to 8 Access Schedules that can be programmed for the system. Fill in the required data on the worksheet below and follow the procedure in the installation instructions as you enter the data during the displays and prompts that appear in sequence.

Acc Sch	Mon		Tues		Wed		Thurs		Fri		Sat		Sun		Hol	
	W1	W2	W1	W2	W1	W2	W1	W2	W1	W2	W1	W2	W1	W2	W1	W2
1																
2																
3																
4																
5																
6																
7																
8																

Temporary Schedule #81 Menu Mode The system provides a Temporary Schedule for each partition. Enter the temporary scheduling mode by pressing [Installer Code] + #81. Fill in the required data on the worksheet below and follow the procedure in the installation instructions as you enter the data during the displays and prompts that appear in sequence.

Partition/Windows		Mon	Tue	Wed	Thu	Fri	Sat	Sun
1	Disarm Window							
	Start Time HH:MM							
	Stop Time HH:MM							
	Arm Window							
	Start Time HH:MM							
	Stop Time HH:MM							
2	Disarm Window							
	Start Time HH:MM							
	Stop Time HH:MM							
	Arm Window							
	Start Time HH:MM							
	Stop Time HH:MM							

WARNING: OWNER'S INSTRUCTION NOTICE NOT TO BE REMOVED
REFER TO INSTRUCTIONS K3521 FOR ADDITIONAL INFORMATION

NOTE: As shipped, Vista-32FB is suitable for UL Commercial Fire Installations. Cabinet supports up to 14AH Batteries. Use Vista-ULKT Cabinet Kit to house up to 34.4AH Batteries. Also use this kit along with 1451 Transformer for UL Listed Commercial Burglary Installations.

THIS EQUIPMENT SHOULD BE INSTALLED IN ACCORDANCE WITH THE NATIONAL FIRE PROTECTION ASSOCIATION'S STANDARD 72 (NATIONAL FIRE PROTECTION ASSOC., BATTERYMARCH PARK, QUINCY, MA. 02269). PRINTED INFORMATION DESCRIBING PROPER INSTALLATION, OPERATION, TESTING, MAINTENANCE AND REPAIR SERVICE IS TO BE PROVIDED WITH THIS EQUIPMENT.

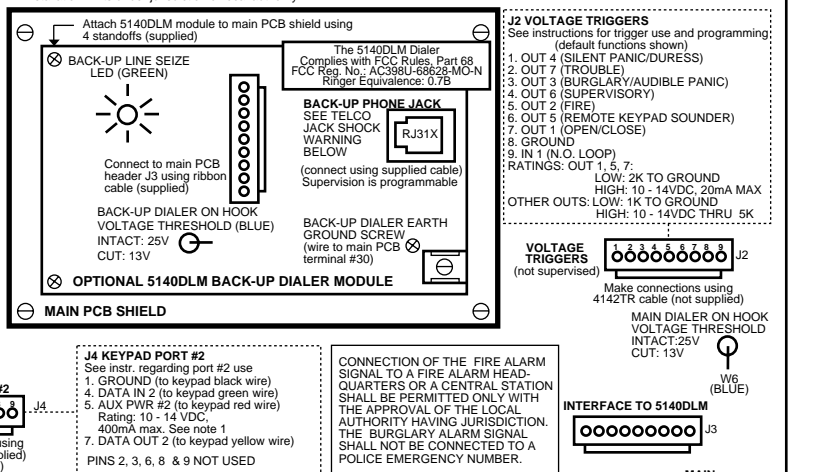
WARNING:
THIS UNIT MAY BE PROGRAMMED TO INCLUDE AN ALARM VERIFICATION FEATURE THAT WILL RESULT IN A DELAY OF THE SYSTEM ALARM SIGNAL FROM THE INDICATED FIRE CIRCUITS. THE TOTAL DELAY (CONTROL UNIT PLUS SMOKE DETECTORS) SHALL NOT EXCEED 60 SECONDS. NO OTHER INITIATING DEVICES SHALL BE CONNECTED TO THESE CIRCUITS UNLESS APPROVED BY THE LOCAL AUTHORITY HAVING JURISDICTION.

CIRCUIT (ZONE)	CONTROL UNIT DELAY-SEC	SMOKE DETECTOR MODEL	DELAY-SEC

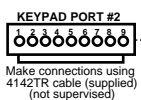
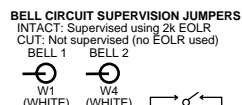
THE DELAY TIME MARKED ON THE INSTALLED DETECTOR(S) IS TO BE USED

TYPES OF FIRE SIGNALLING SERVICE:

Manual fire alarm, automatic fire alarm, sprinkler supervisory and waterflow alarm. UL Listed local control (non-coded). UL Listed central station and remote station protected premises unit when used with 5140DLM back-up dialer module. Installation limits under jurisdiction of local authority.



Connect to 12V, 7AH min/34.4AH max lead acid batteries using cables supplied. See instructions for required capacity. Float charging voltage: 13.7VDC. Battery normally need not be replaced for at least 3 yrs.



J4 KEYPAD PORT #2
See instr. regarding port #2 use

- GROUND (to keypad black wire)
- DATA IN 2 (to keypad green wire)
- AUX PWR #2 (to keypad red wire)

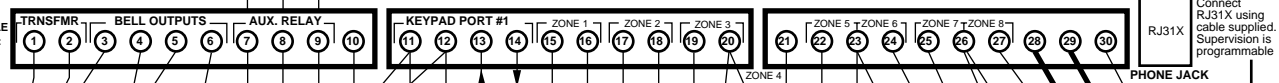
Rating: 10 - 14 VDC, 400mA max. See note 1

- DATA OUT 2 (to keypad yellow wire)

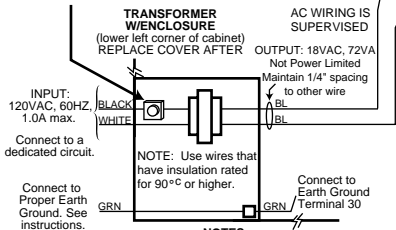
PINS 2, 3, 6, 8 & 9 NOT USED

CONNECTION OF THE FIRE ALARM SIGNAL TO A FIRE ALARM HEAD-QUARTERS OR A CENTRAL STATION SHALL BE PERMITTED ONLY WITH THE APPROVAL OF THE LOCAL AUTHORITY HAVING JURISDICTION. THE BURGLARY ALARM SIGNAL SHALL NOT BE CONNECTED TO A POLICE EMERGENCY NUMBER.

OPTIONAL REMOVABLE TERMINAL BLOCK KIT:
ADEMCO NO. 4142BLK



2A Circuit Breaker



NOTES:

NOTE 1:
The combined standby current drawn from aux pwr #1, aux pwr #2; and polling loop cannot exceed 1.0A. The combined alarm current drawn from aux pwr #1, aux pwr #2, polling loop, bell 1 and bell 2 cannot exceed 2.3A.

NOTE 2:
2k EOLR is Ademco model 610-7

NOTE 3:
See instructions on setting addresses & for max # of keypads and wire run length restrictions. Keypad color subject to approval of local authority.

Each output may be selected for Style Y supervision or no supervision (See main PCB jumpers W1, W4 and zone 970, 971, programming).

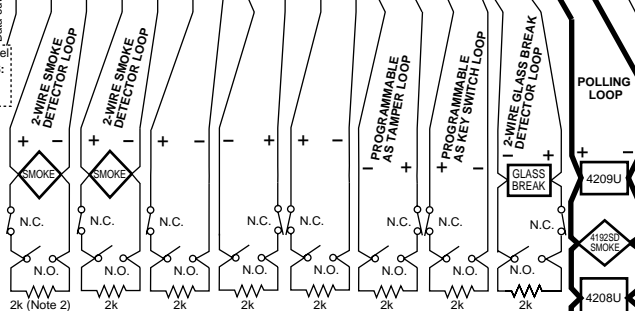
FIRE CKTS: Supervise using 2k EOLR. Use polarized sounding devices.

BURG CKTS: Supervision not req'd. EOLRs not req'd. May use non polarized devices.

Ratings: 10 - 14VDC, 1.7A max. See note 1, see instructions for compatible devices.

For commercial fire, bell timeout must be a minimum of 6 minutes.

ALL CIRCUITS ARE POWER LIMITED EXCEPT THE OUTPUT OF THE POWER TRANSFORMER



WARNING:
TO PREVENT RISK OF ELECTRICAL SHOCK, DISCONNECT TELCO JACK BEFORE SERVICING THIS PANEL

EARTH GROUND
See instructions for proper earth ground connections

TO OTHER DEVICES
Polling Loop Ratings: (supervised) 128mA max. See Note 1. See instructions for compatible devices and for max wire run length

The VISTA-32FB Main Dialer
Complies with FCC Rules, Part 68
FCC Reg. No.: AC398U-68192-AL-E
Ringer Equivalence: 0.7B

VISTA-32FB SUMMARY OF CONNECTIONS

ADEMCO
GROUP

165 Eileen Way, Syosset, NY, 11791
Copyright © 2000 PITTMWAY Corporation



K3840V1 9/00